



*Skyline*





**1984**  
SINCE



**+26**  
SUCCESSFUL  
PROJECTS



**+600**  
EMPLOYEES



**520,000**  
M2 BUILT



**135,000**  
M2 UNDER  
CONSTRUCTION



**+84**  
CINEMAS

## +34 YEARS OF EXPERIENCE

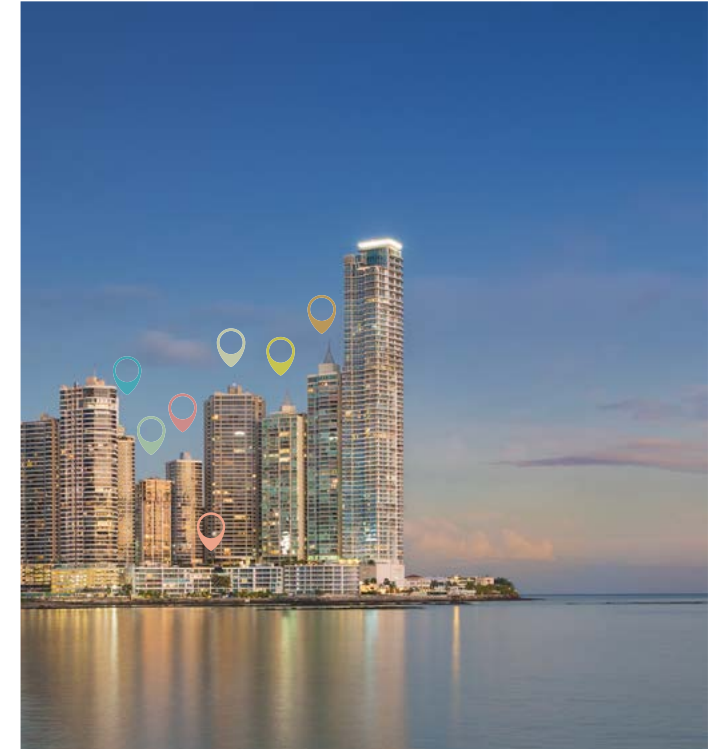
For over 34 years, Desarrollo Bahía has led the real estate development of Panama City. With each project, he has sought to reinvent himself by investing in the future.

The company refuses to settle for traditional projects; It has a truly rich and diverse portfolio of more than 360,000m<sup>2</sup> built and another 160,000m<sup>2</sup> under construction between residential and commercial projects, cinemas, shopping centers and hotels, which makes it a pioneer in the world of real estate and construction, naturally establishing new standards in the industry.

## +34 YEARS DEVELOPING THINKING ABOUT THE FUTURE



Panama City 1965



Panama City 2018



1989  
Mediterrané

The beginning of a dream that today takes more than 30 years. Mediterranean was our first project under construction, at the time, one of the highest towers in Panama.



1996  
Villa Marina



1998  
Hotel Marriott Panama

Desarrollo Bahía sets foot in the hospitality world, marking the difference with the first luxurious hotel, the first Marriott in the country.



2003  
Bahía Pacifica



2008  
C.C. Multiplaza Pacific

Introducing ourselves into the commercial world, we became part of the construction of the most luxurious, largest and recognized shopping mall in the country.



2011  
VIP Multiplaza

4 Cinemas  
Always focused on luxury, we arrive in Panama with the first VIP cinema room with leather seats, bar / restaurant and personalized attention.



2012  
Miradores



2013  
Cinepolis Westland mall

8 cinemas



2015  
Financial Park



2016  
Cinepolis Los Andes Mall

6 cinemas



2017  
Cinepolis Town Center

3 cinemas VIP  
5 cinemas



The Regent  
Under construction.



# +34 YEARS OF EXPERIENCE



1993  
Mar de Plata



1998  
Plaza Banco General

First luxury office tower in the city, located where all businesses are centered, the banking area.



2002  
Peninsula



2004  
Punta Roca



2008  
Cinepolis MP

10 cinemas  
Cinepolis arrives to Panama from the hand of Desarrollo Bahía. First Cinema room with the latest technology screens in the country.



2011  
Cinepolis Metromall

10 cinemas



2012  
The Point

One of the most iconic tower at Panama skyline. Awarded by Cames as the highest residential project in Latin America.



2012  
Tower Financial Center

Luxury and business merge into one of the most elegant and iconic towers in Panama City, the TowerBank Tower.

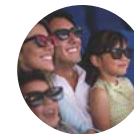


2014  
Country Club



2015  
Cinepolis VIP Soho Mall

7 cinemas



2017  
Cinepolis Dorado Mall

9 cinemas



The Tower

Under construction



Skyline

Under construction





# PANAMA CITY

Panama City is a magical place with an important cultural mix. In a few years it has been managed to become a city of cosmopolitan life, a combination of the historical and the modern, the international and the local. One of its main attractions is the shining skyline full of lights, where Desarrollo Bahia is an important part of its construction.



# A

# RCHITECT

IGNACIO MALLOL

President of the architectural firm Mallol & Mallol, a firm that has designed and built the largest number of projects in the country, considered the most important in Panama and Central America.

The curved design of Skyline shows us the genius of Arch. Mallol who brings us on this occasion a proposal inspired by new trends and architectural modernism.

**Mallol**





# D ESIGNER

ADRIANA HOYOS

In Skyline we have incorporated Adriana Hoyos who is a born designer with a great passion for design and sophistication. She will be the person in charge of designing the interior space with the most advanced international standards, integrating her design experience of important projects in Miami and other major cities of the world.

Adriana Hoyos brings the curves to Skyline, converting the bathroom into a spa, the closet in a boutique and the livingroom in a lounge area.

 **AHDS**  
ADRIANA HOYOS DESIGN STUDIO



PRESENTING  
OUR  
NEXT  
JEWEL

En Ciudad de Panamá





# *Skyline*

CURVES IN A WORLD OF STRAIGH LINES







DESIGN  
PARK







# 42

## SKY DECK

Infinity curve pool  
Sundeck  
Lounge areas  
Meditation and yoga room  
Work station

## SOCIAL AREA

Unique amenities for  
VIP residents  
VIP cinema | Car simulator  
Golf simulator | Kids and adults pool  
Fully equipped gym | Sports areas

# AS

# PB

## SOPHISTICATED LOBBY

Lobby of 7 meters high  
Interior design by Adriana Hoyos  
Great garage door  
Elegant hall



# 42

ND  
LEVEL

Infinity curve pool  
Sundeck  
Lounge areas  
Meditation and yoga  
room  
Work station







## DINNING WITH A VIEW

The curved and innovative design of Skyline, allows each room to enjoy priceless moments, enjoying unbeatable mix between the lights of the city and the sound of the ocean





# SLEEP ON THE CLOUDS

The design of the bedrooms was created thinking of the sensation of sleeping on the clouds, panoramic windows from floor to ceiling give you a unique experience



# THE SPA-LIKE PANORAMIC BATH

**ADRIANA HOYOS** understood the demands of our customers, for this reason she modernized the bathroom concept transforming it into your own spa. With floor to ceiling windows that offers the best view and privacy you need.





# YOUR PRIVATE BOUTIQUE

A closet is a space to store clothing. A private boutique is a place to express yourself through fashion.

**ADRIANA HOYOS** surprises us with its modern style in a space where it converts a simple closet into a haute couture catwalk.





## THE VIEW

skyline for its position offers the best view of the entire Costa del Este Area. in addition to its curved shape and panoramic windows, we managed yo expand the angle of view from all the apartments.





# LUXURY PARKING EXPERIENCE

Park with style in the unique parking spaces with top design for our high profile customers. A luxurious design for a VIP experience.





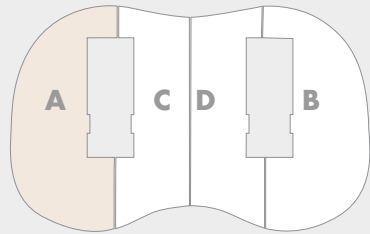




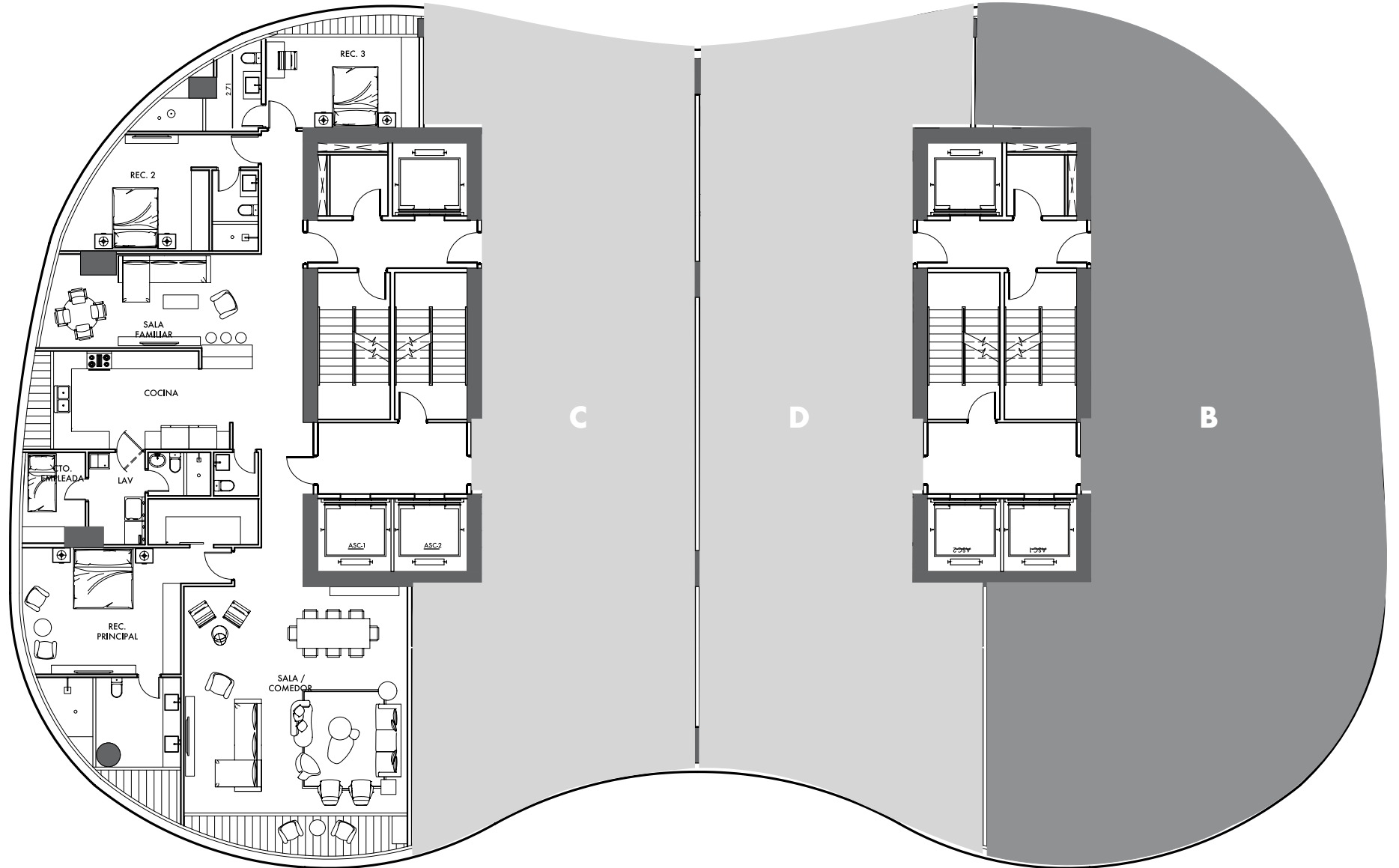
**INNOVATIVE  
LAYOUTS**

# 275m<sup>2</sup> MODELO A-B

3 rooms  
C / B / E  
Dining room  
Closed kitchen  
Family room  
Balcony



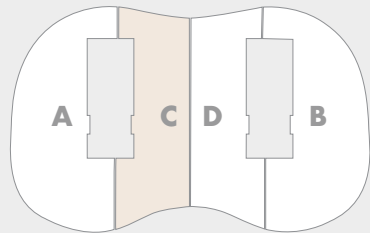
*Skyline*



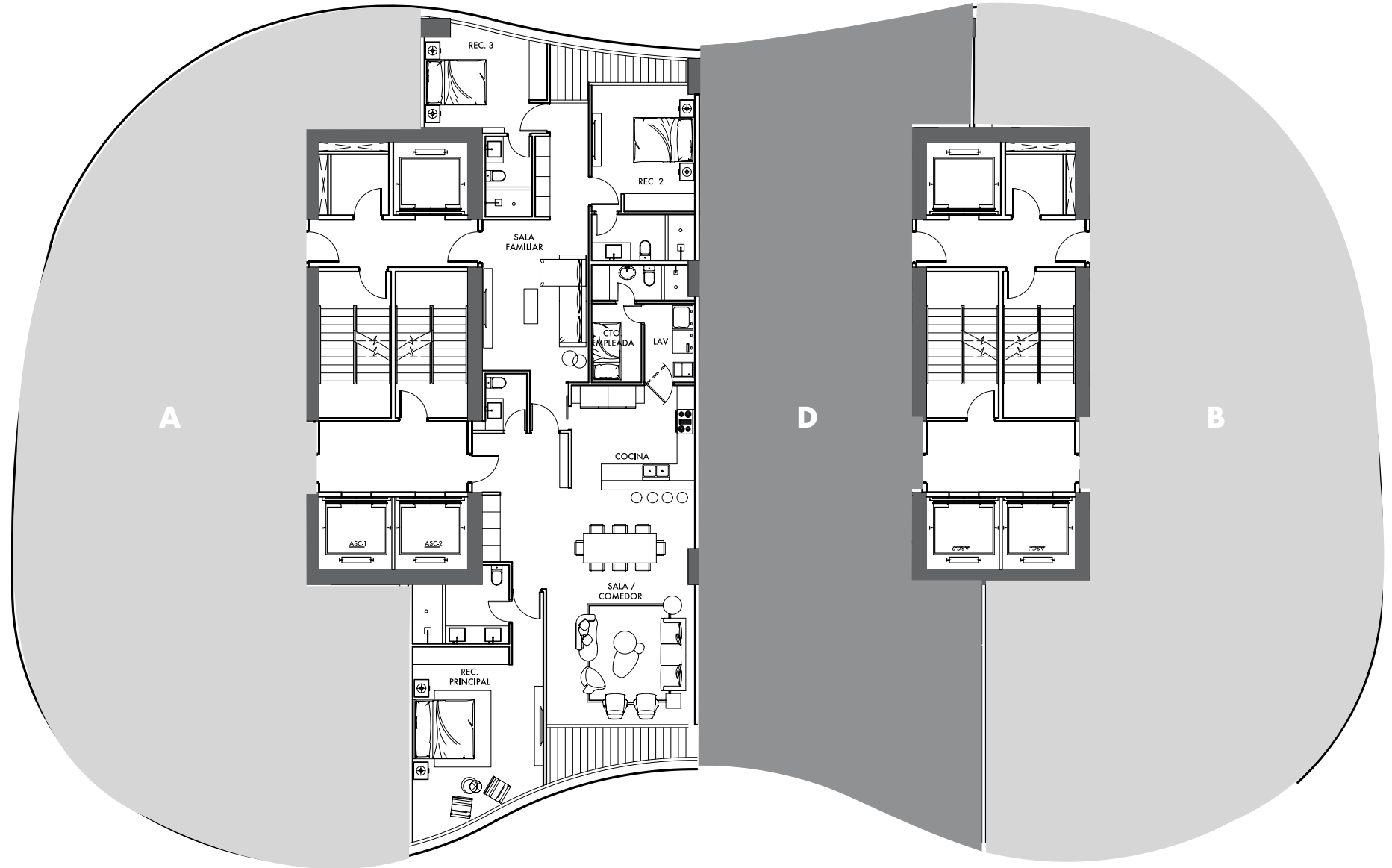


# 210m<sup>2</sup> MODELO C-D

3 rooms  
C / B / E  
Dining room  
Kitchen  
Family room  
Balcony

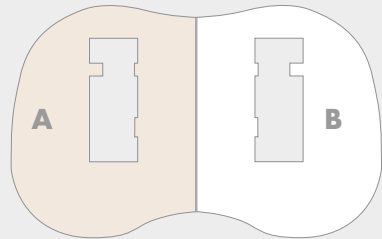


*Skyline*

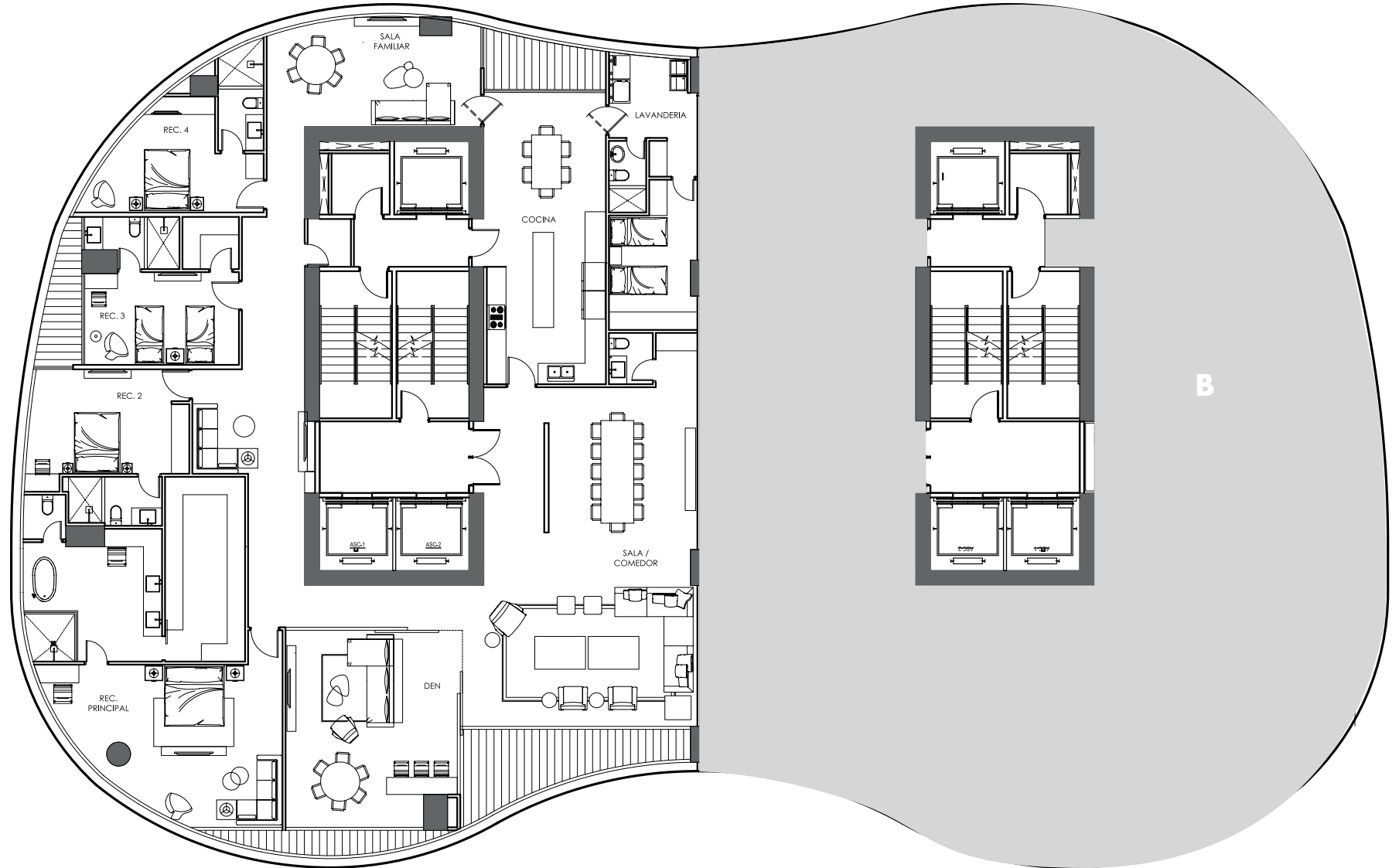


# 480m<sup>2</sup> MODELO A-B

- 4 bedrooms
- Walk-in closet
- C / B / E
- Laundry
- Room
- dinning room
- Family room
- Kitchen
- Breakfast area
- Family room
- Den
- Balcony



*Skyline*







**LUXURY  
EXPERIENCE**



# SPECIAL AMENITIES

Only project in Panama with golf simulator  
Luxury work station  
Conference room  
VIP cinema by Cinepolis  
Events room  
Infinity pool  
Full equipped gym







## VIP CINEMA AT HOME

VIP cinema by Cinepolis



# CONCIERGE SERVICE

Living in Skyline means having a luxury lifestyle, that's why it will offer a hotel-service with valet parking, laundry service and everything you need at your disposal.

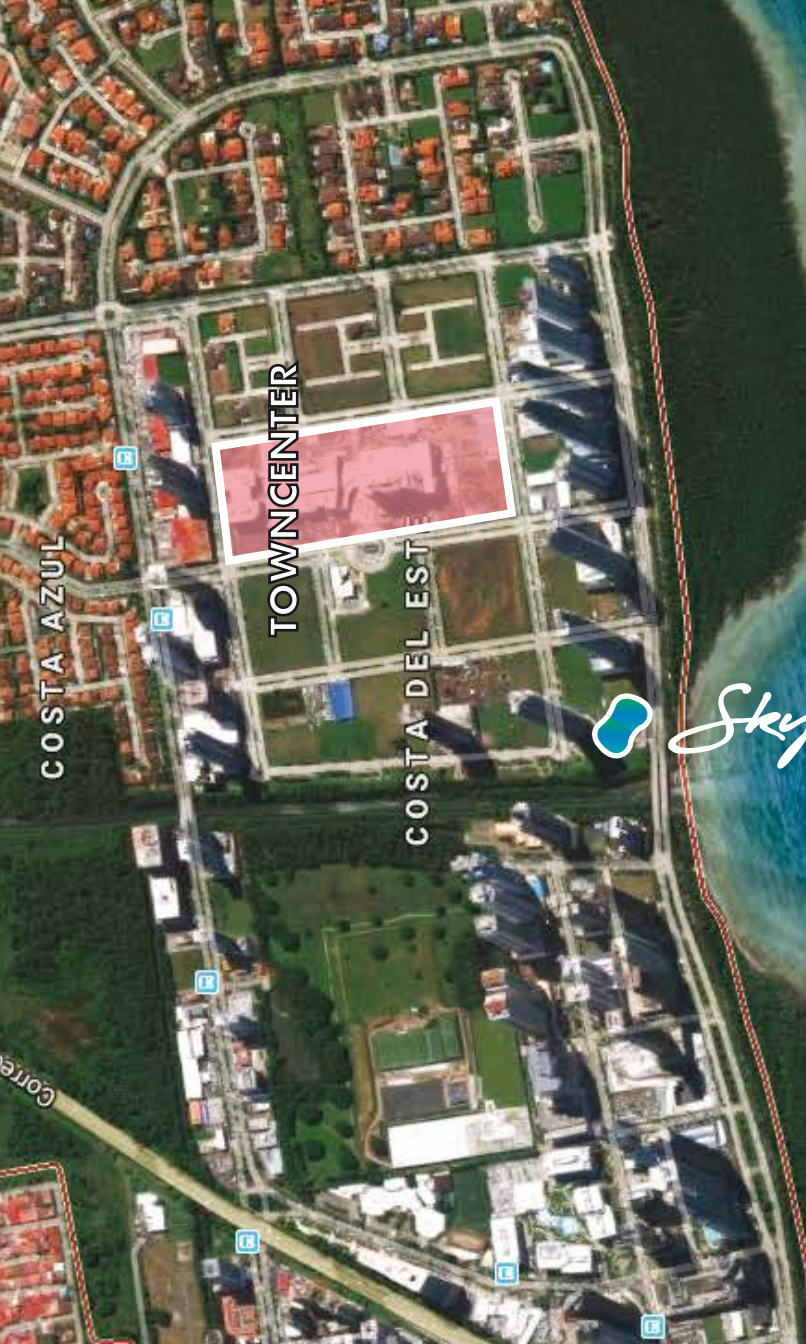


# COSTA DEL ESTE

One of the most exclusive areas in Panama City.  
At walking distance to supermarkets, hospitals, schools, pharmacies.







# IT'S ALL ABOUT LOCATION

## *Costa del Este*

One of the most exclusive areas of Panama. At walking distances from shopping center, pharmacy, schools, hospital, restaurants.

Located in the best land of Costa del Este, the building has a level of rotation that allows having the best panoramic view, in addition to the sides there are free construction spaces which offers extra privacy to the residents.

**ONLY 5 MINUTES FROM THE TOWN CENTER  
IT IS THE NEAREST BUILDING TO THE SEA**





# Skylines

A PROJECT THAT MERGE THE EXPERIENCE OF PROFESSIONAL RENOWNED



Architecture by the hand of  
Ignacio Mallol, the award-winning and most  
renowned architect of Panama.



Developers of Skylines project,  
with more than 30 years of experience  
building Architectural Jewels.



Interior Design by Adriana Hoyos,  
a pioneer of her unique style in interior design  
and her high-end furniture collections.

+507 214.8888

[ventas@desarrollobahia.com](mailto:ventas@desarrollobahia.com)

[www.DesarrolloBahia.com](http://www.DesarrolloBahia.com)

