

# MIRADORES

PUNTA PAITILLA

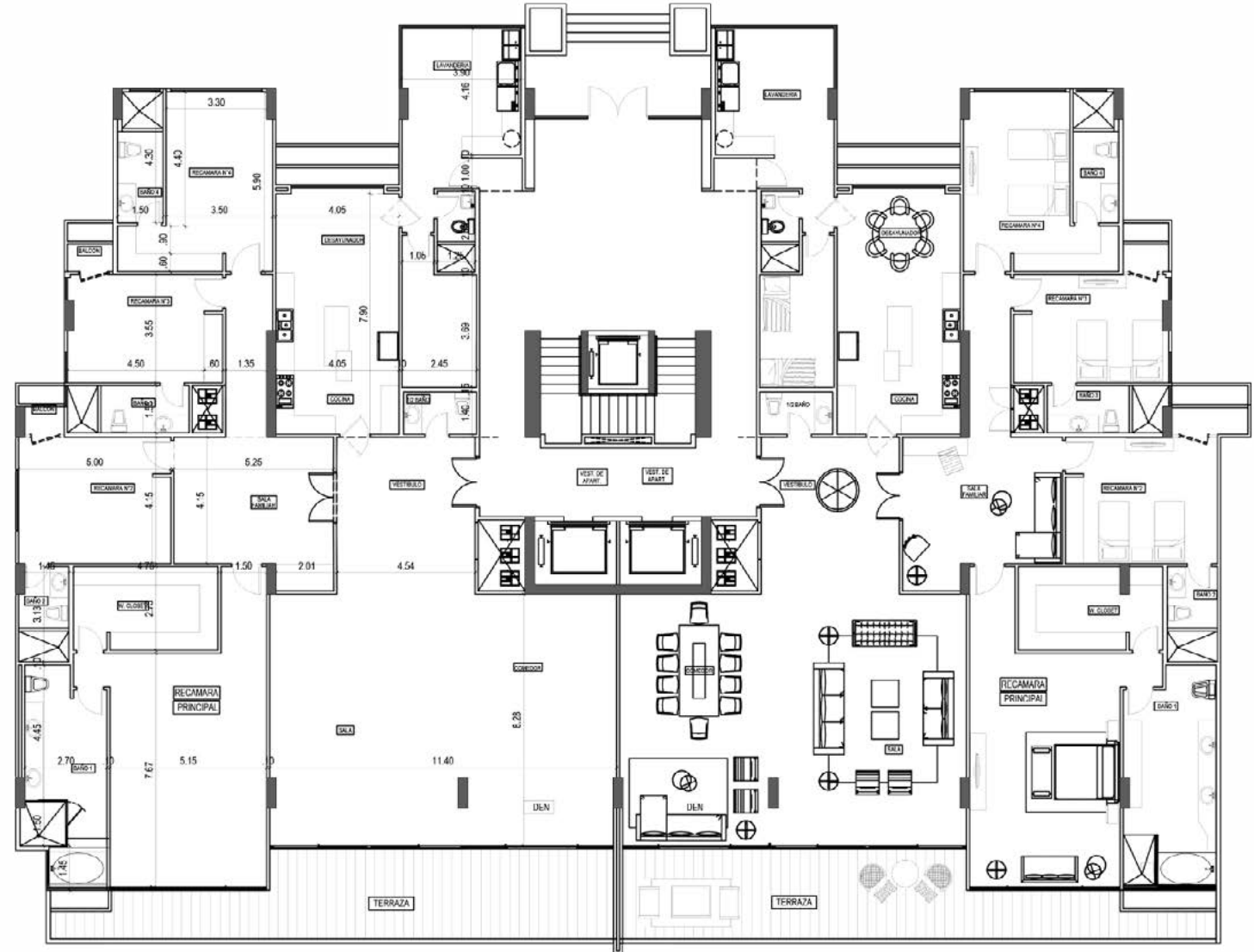




# TORRE 100

SQUARE METRES: 480M2

4 rooms, each with a private bathroom  
Living room/dining room  
2 family Dens  
Wide closed kitchen  
Great balcony with a beautiful view



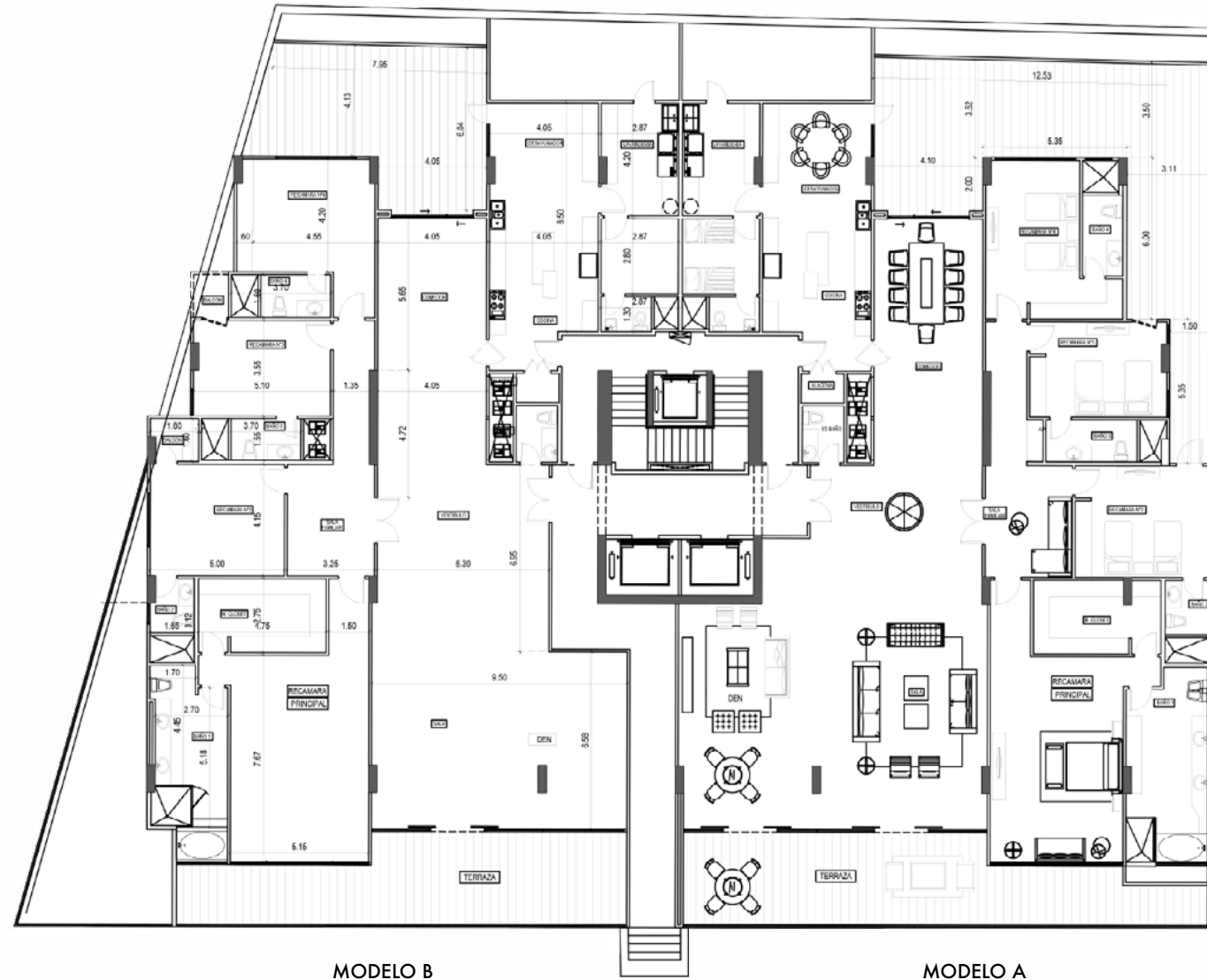
	T1	T2	T3
6			
5			
4			
3			
2			
1			

BA

# TORRE 100

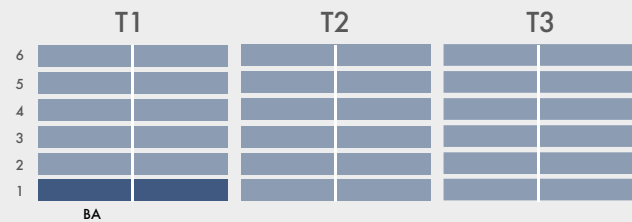
SQUARE METRES: 507m<sup>2</sup> - 532M<sup>2</sup>

4 rooms each with private bathroom  
 Living room/ dining room  
 2 family dens  
 Wide closed kitchen  
 Great balcony with a beautiful view.



MODELO B

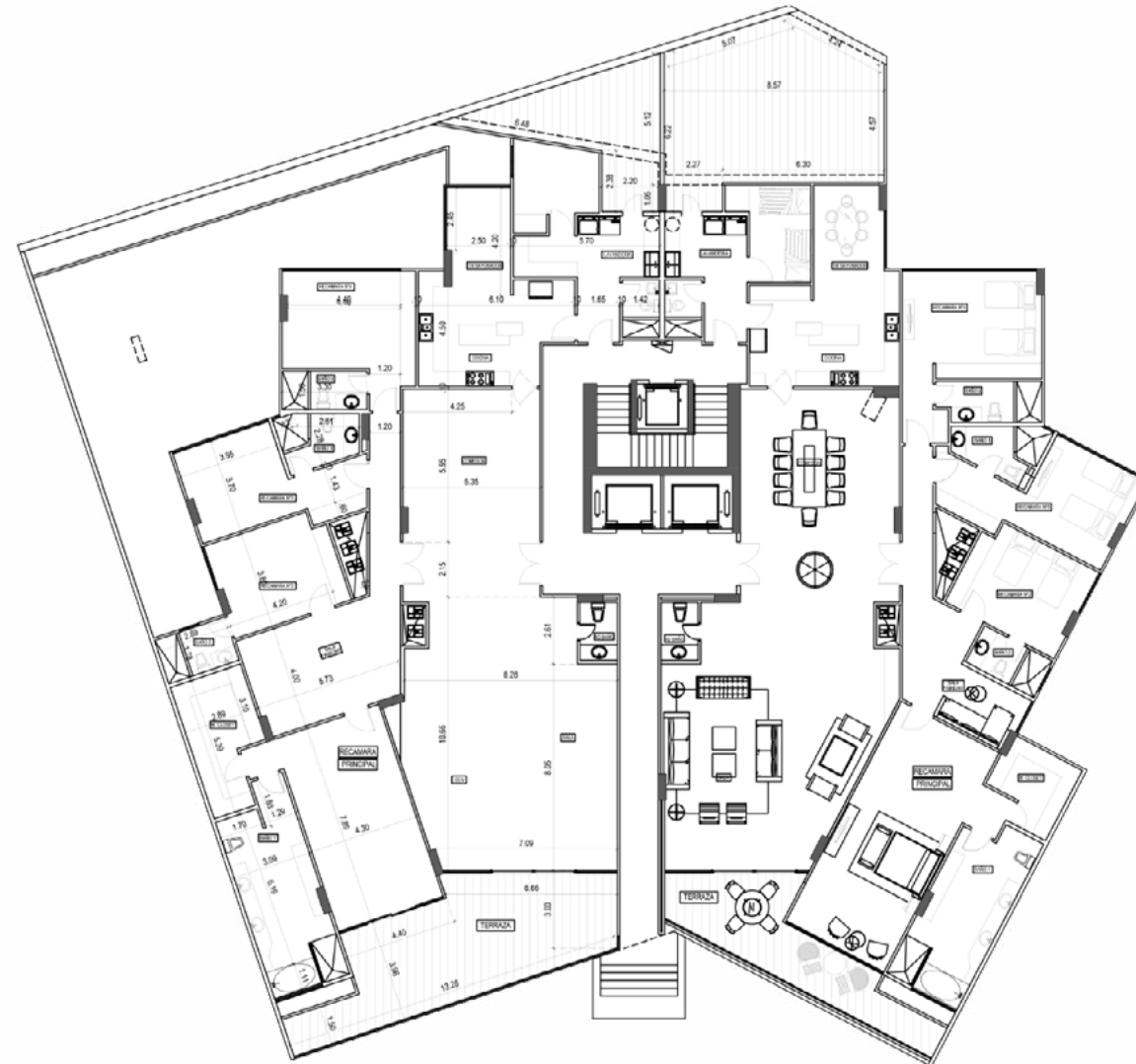
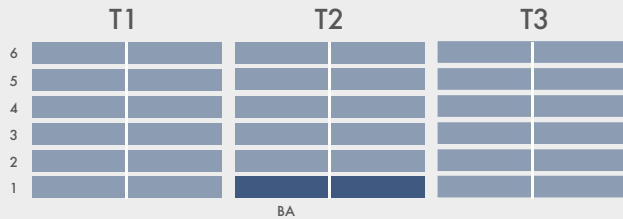
MODELO A



# TORRE 200

SQUARE METRES: 482M2 - 452M2

4 rooms each with a private bathroom  
Living room/dining room  
2 family dens  
Wide closed kitchen  
Great Balcony with a beautiful view



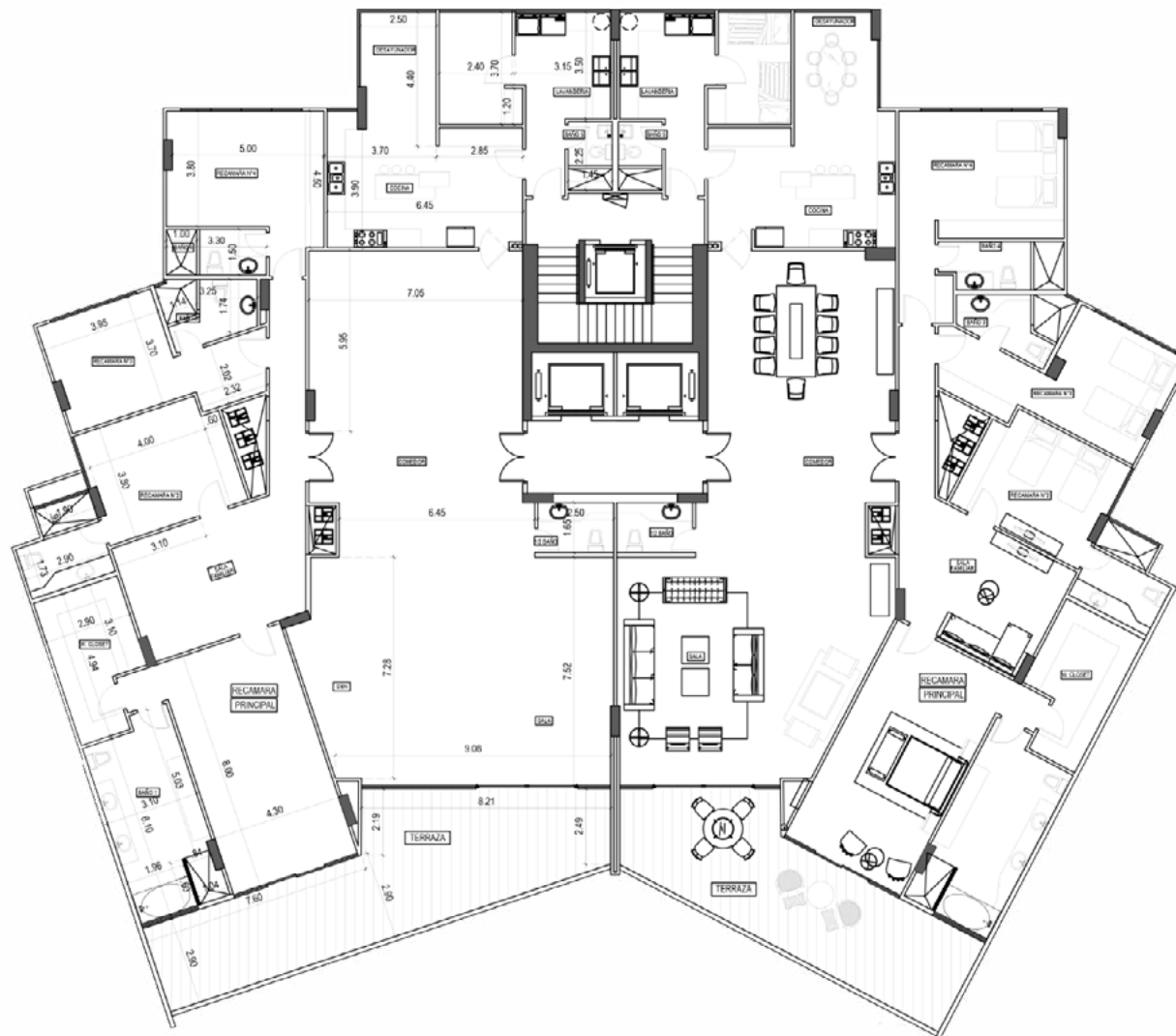
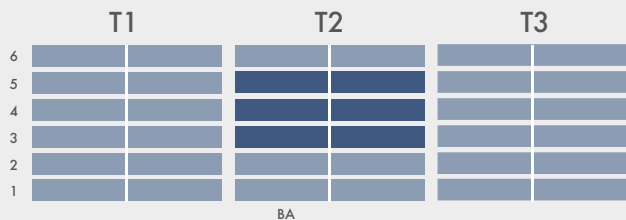
MODELO B

MODELO A

# TORRE 200

SQUARE METRES: 460M2

4 rooms each with a private bathroom  
 Living room/dining room  
 2 family dens  
 Wide closed kitchen  
 Great balcony with a beautiful view



MODELO B

MODELO A

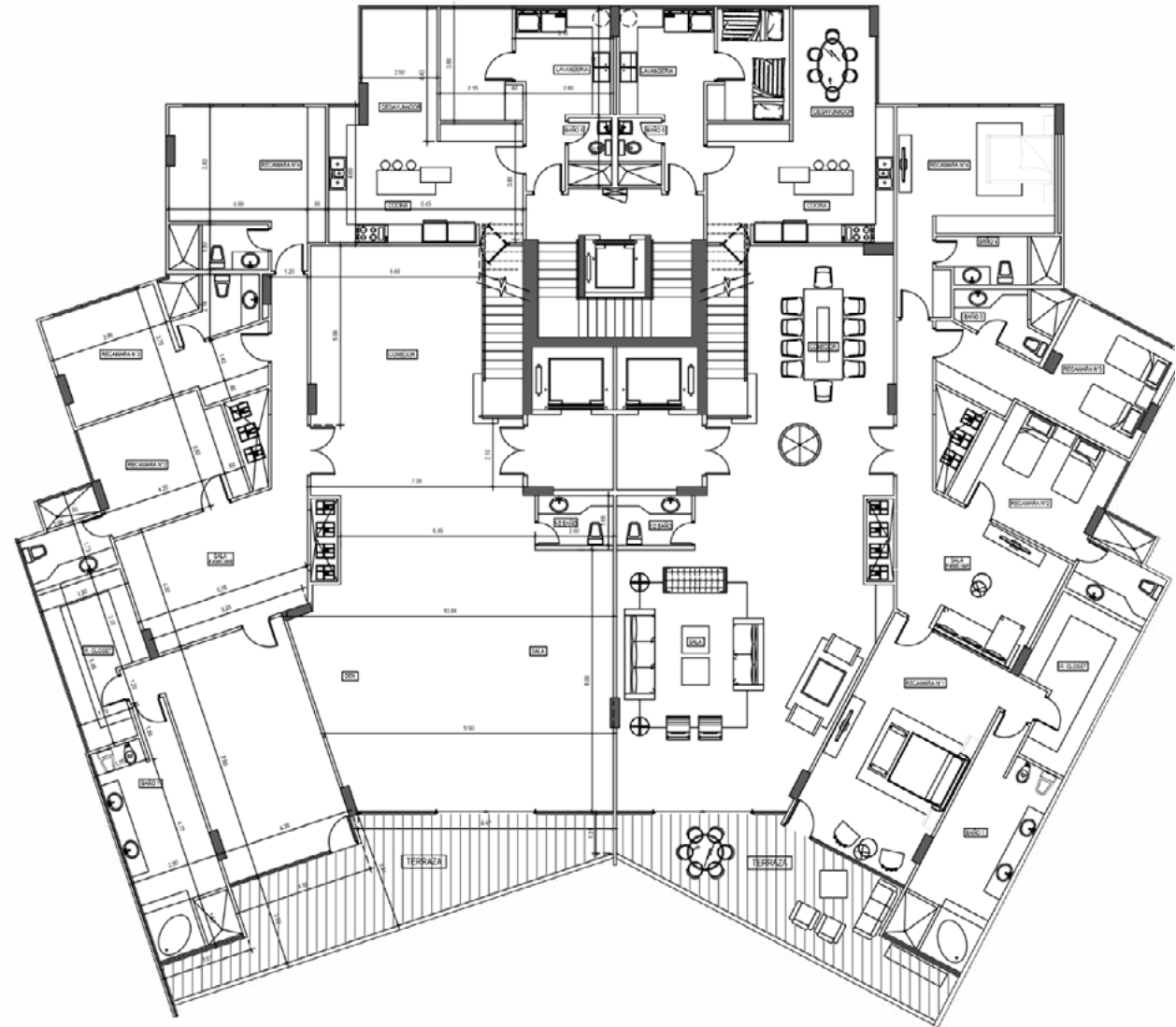
# TORRE 200

SQUARE METRES: 560 - 530M2

4 rooms each with a private bathroom  
Living room/ dining room  
2 family den  
Wide closed kitchen  
Great balcony with a beautiful view

	T1	T2	T3
6			
5			
4			
3			
2			
1			

BA



MODELO B

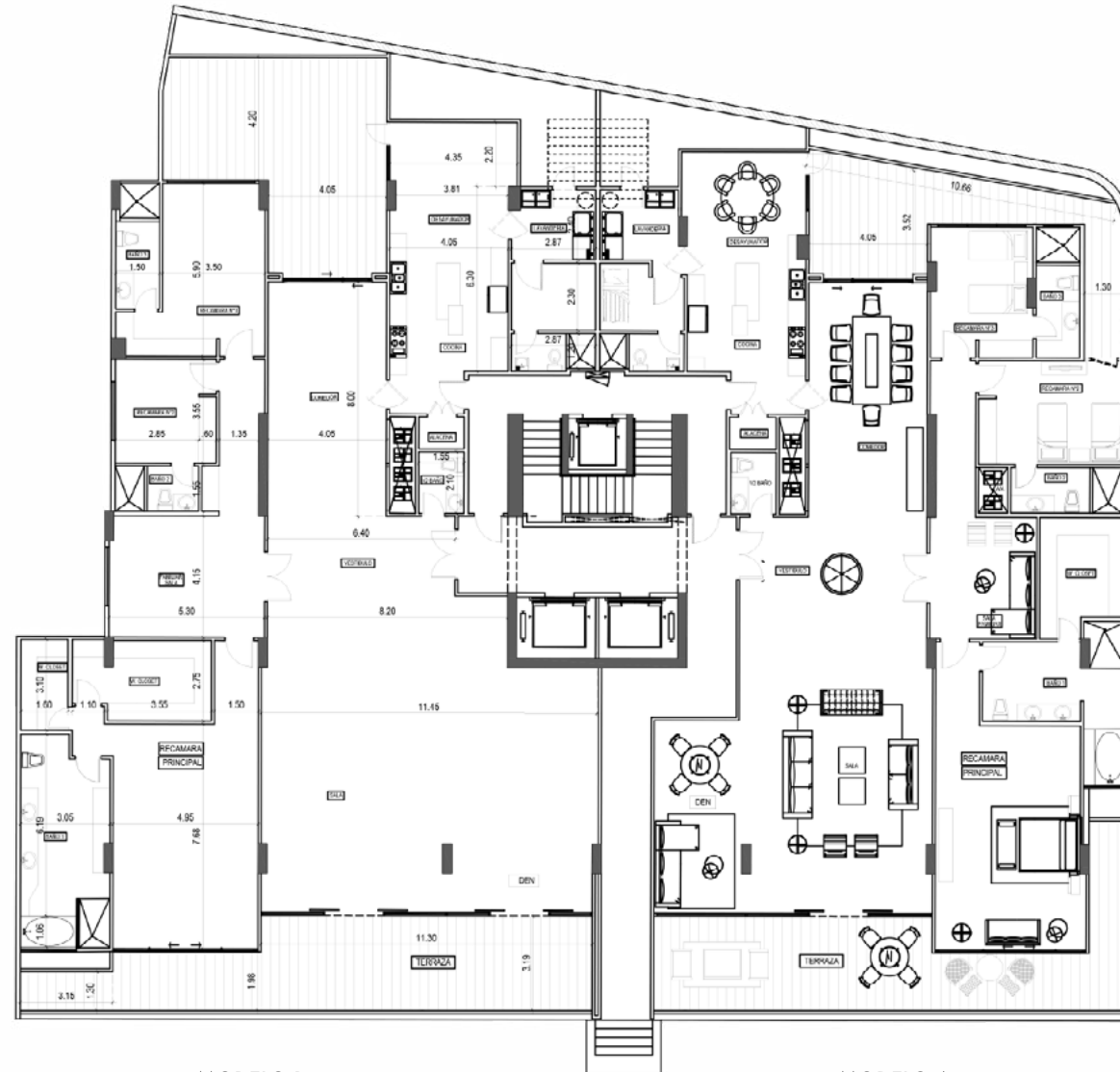
MODELO A

# TORRE 300

SQUARE METRES: 500M2 - 450M2

- 4 rooms each with a private bathroom
- Living room/ dining room
- 2 family dens
- Wide closed kitchen
- Great balcony with a beautiful view

	T1	T2	T3
6			
5			
4			
3			
2			
1			BA



MODELO B

MODELO A

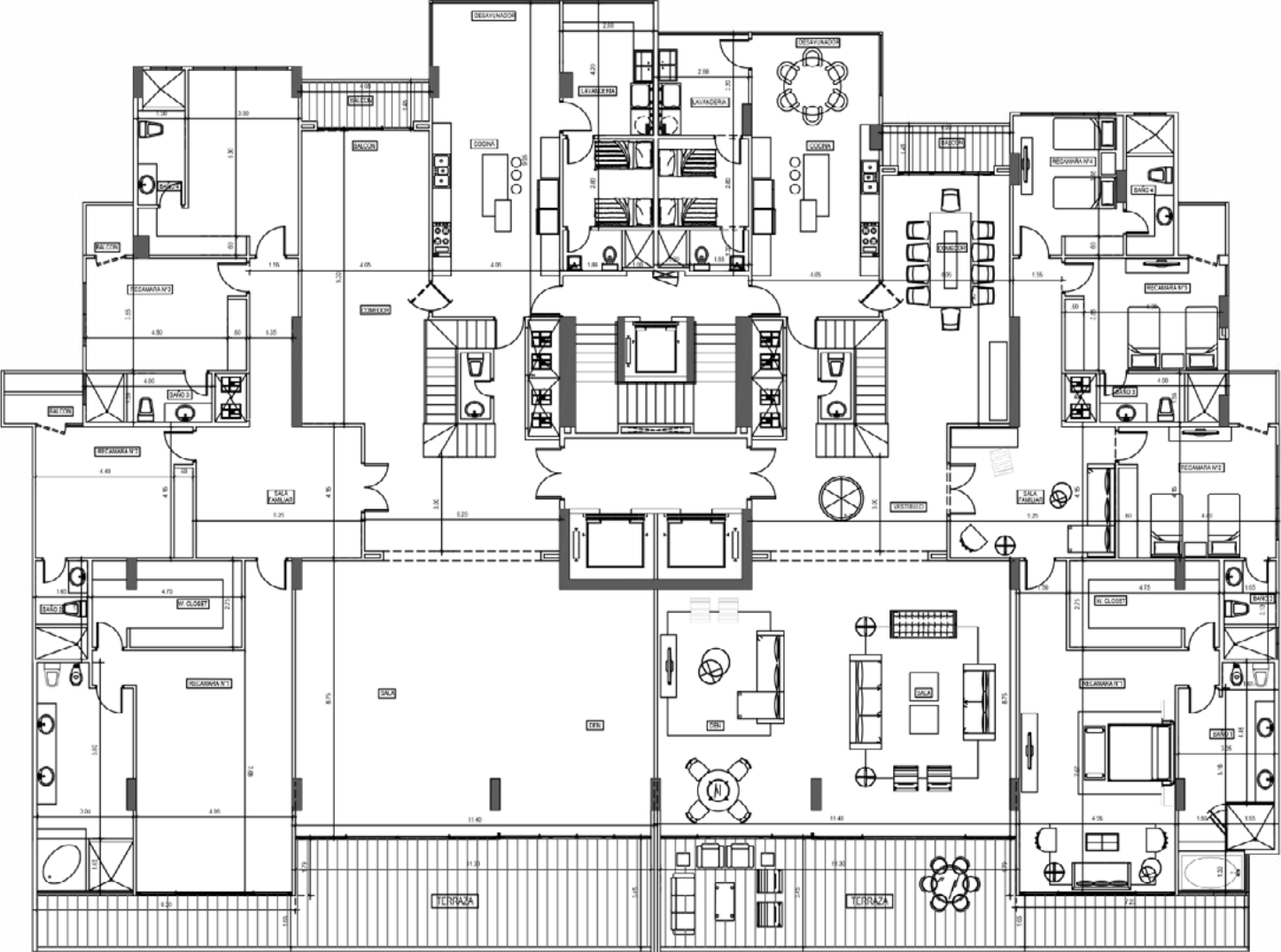
# TORRE 300

SQUARE METRES: 600M2 - 580M2

- 4 rooms each with a private bathroom
- Living room/ dining room
- 2 family dens
- Wide closed kitchen
- Great balcony with a beautiful view



BA



MODELO B

MODELO A



## OVERALL

6 story apartments  
3 towers 2 apartments per floor  
3 independent lobbies  
Square metres from 480m2  
The best view of the city and the bay  
Security 24/7

## LUXURY FINISHES

Ivory floors  
Ivory walls in the bathrooms  
Bathrooms with ivory toppings  
Kitchens with granite walls, floors and toppings  
Italian modular kitchen  
Bathrooms with italian furniture  
Solid wooden doors with decorative moldings  
Panoramic glasses from floor to ceiling  
American accessories in the bathrooms including private jacuzzi.

## SOCIAL AREA

3 elegant lobbies decorated with great luxury  
A pool for all ages  
Event hall  
Pool's gazebo for special occasions  
Gym with a beautiful view  
Gardens/green areas

VIVE EN EL PROYECTO  
MÁS ÍNTIMO DE LA CIUDAD







# MIRADORES

PUNTA PAITILLA

## LOCATION

Located in the best spot of Punta Paitilla

It is the most exclusive building and with the lowest density in Panama City.

Punta Paitilla is one of the most exclusive zones in the city due to its proximity to the ocean and its central location.





+507 214.8888

[ventas@desarrollobahia.com](mailto:ventas@desarrollobahia.com)

[www.DesarrolloBahia.com](http://www.DesarrolloBahia.com)



YOU DESERVE  
**LUXURY**