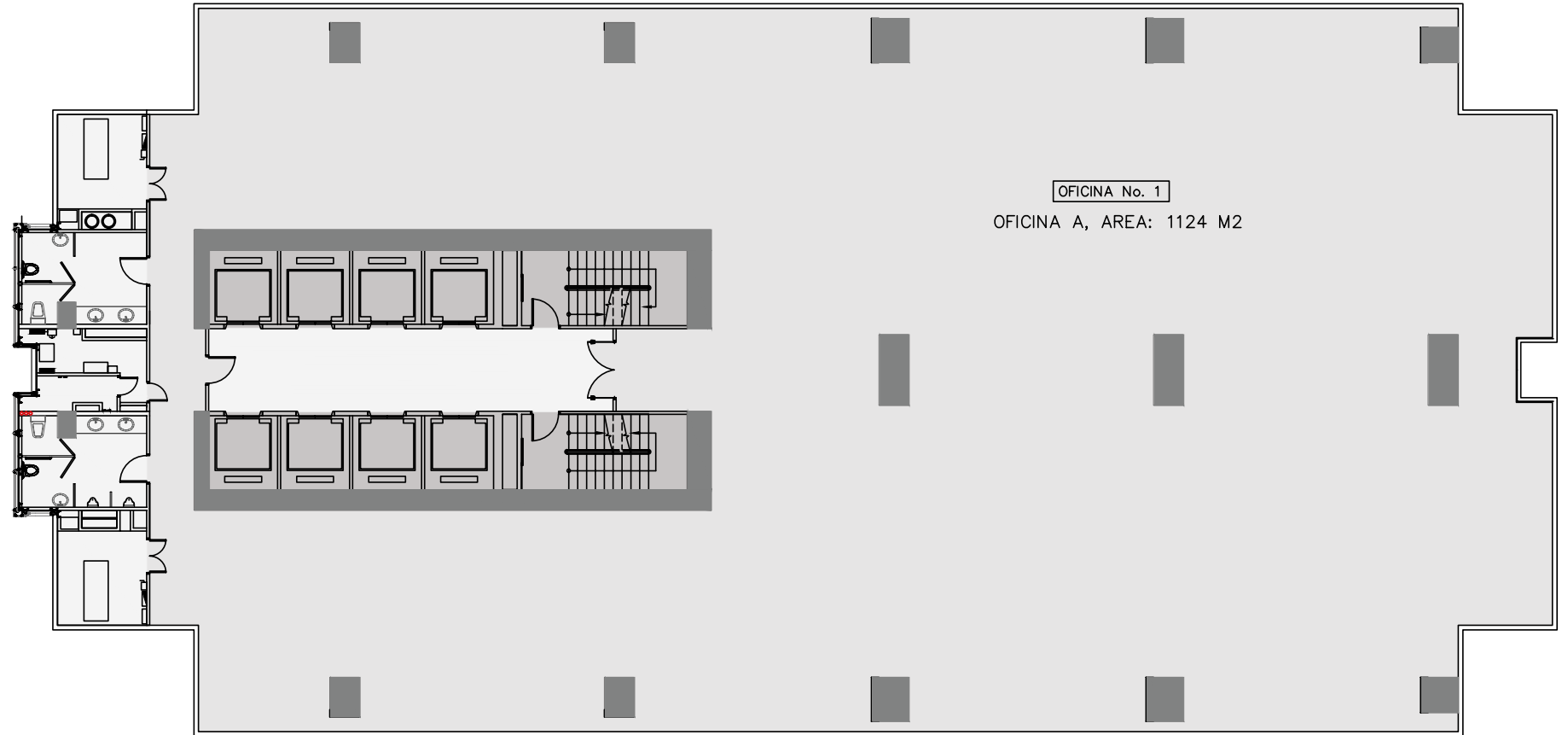




OFFICE

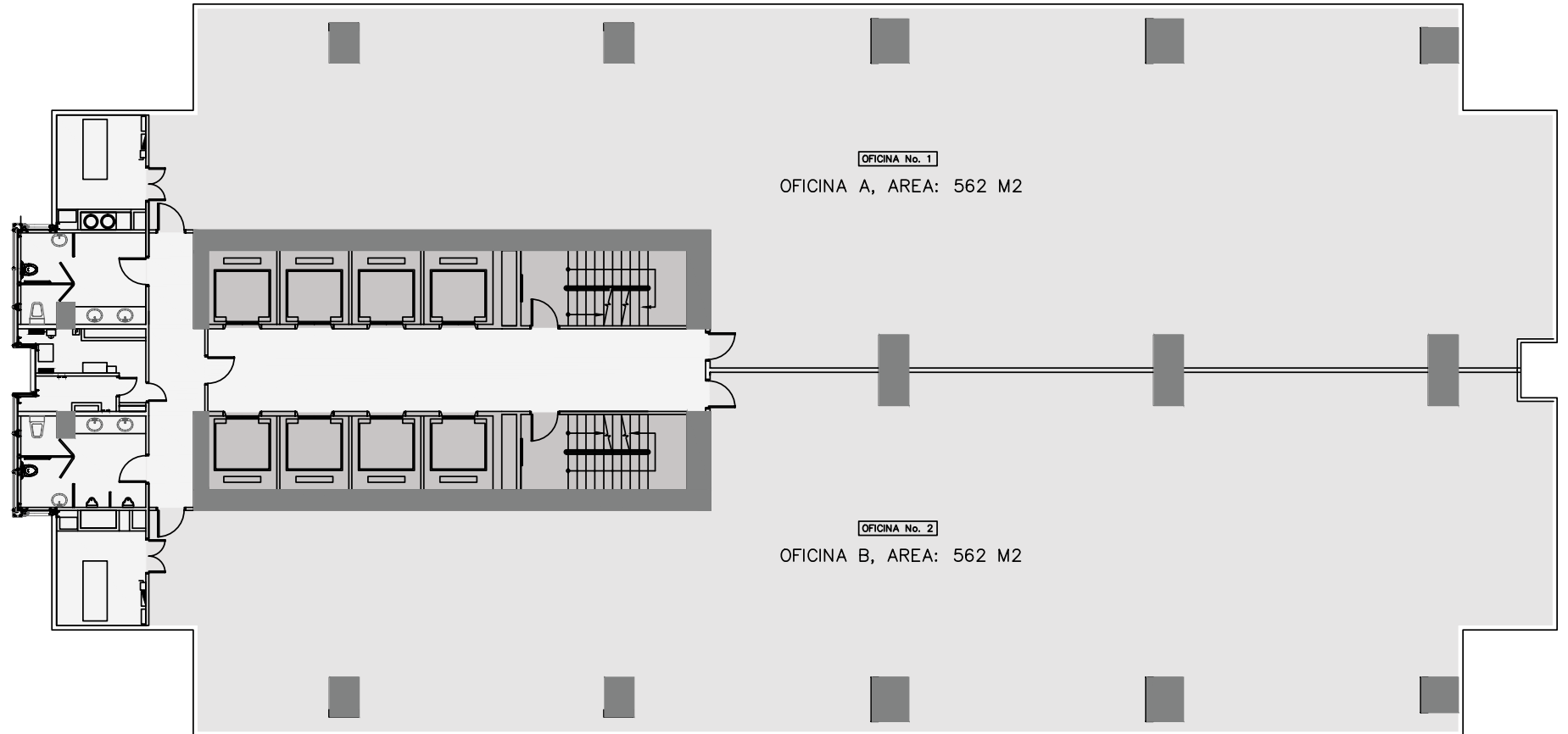
1224m²

- 1 Office per floor
- Open spaces without columns
- Beautiful panoramic view to the sea
- Luxurious finishes
- 8 high speed elevators



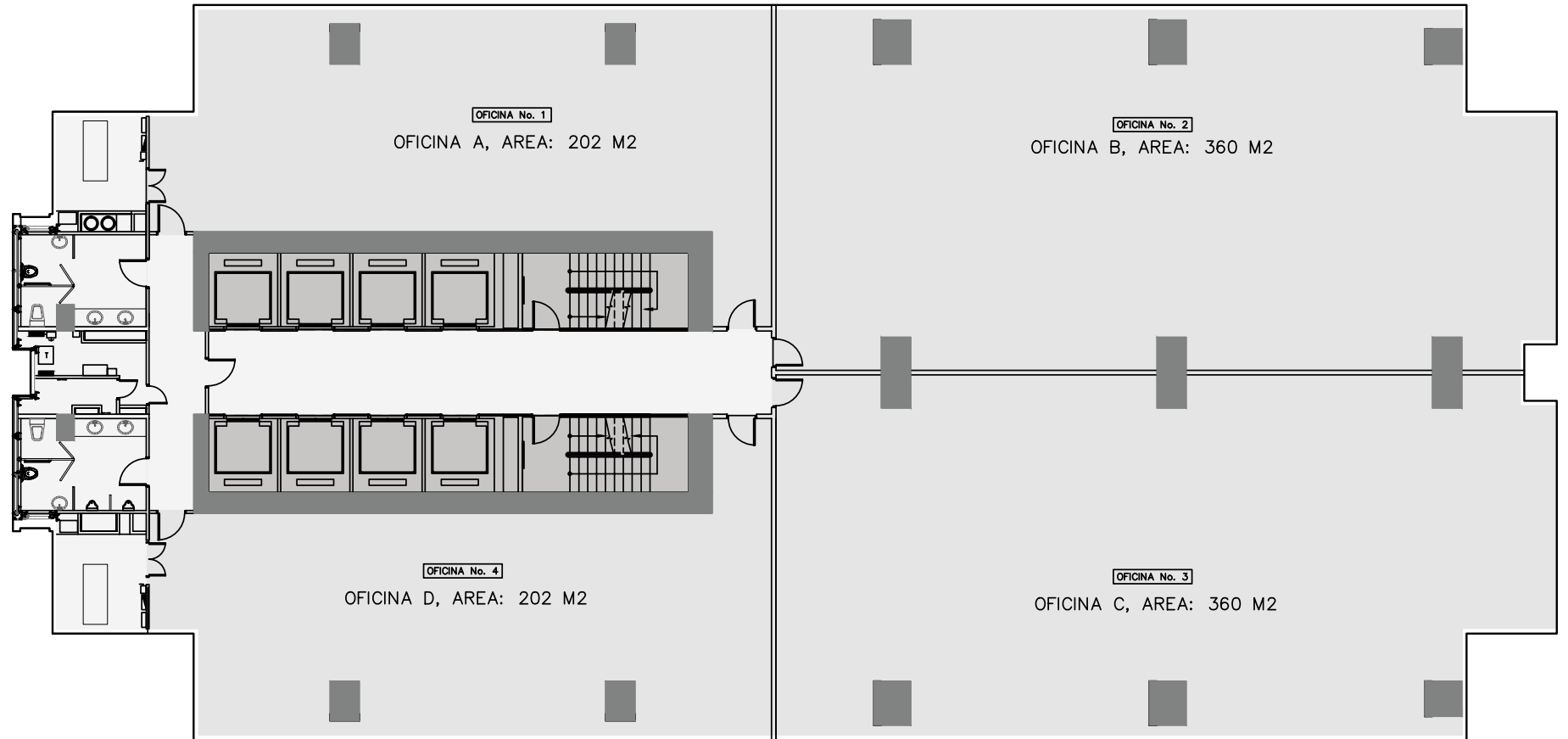
OFFICES
562m2

- 2 offices per floor
- Open spaces without columns
- Beautiful panoramic view to the sea
- Luxurious finishes
- 8 high speed elevators



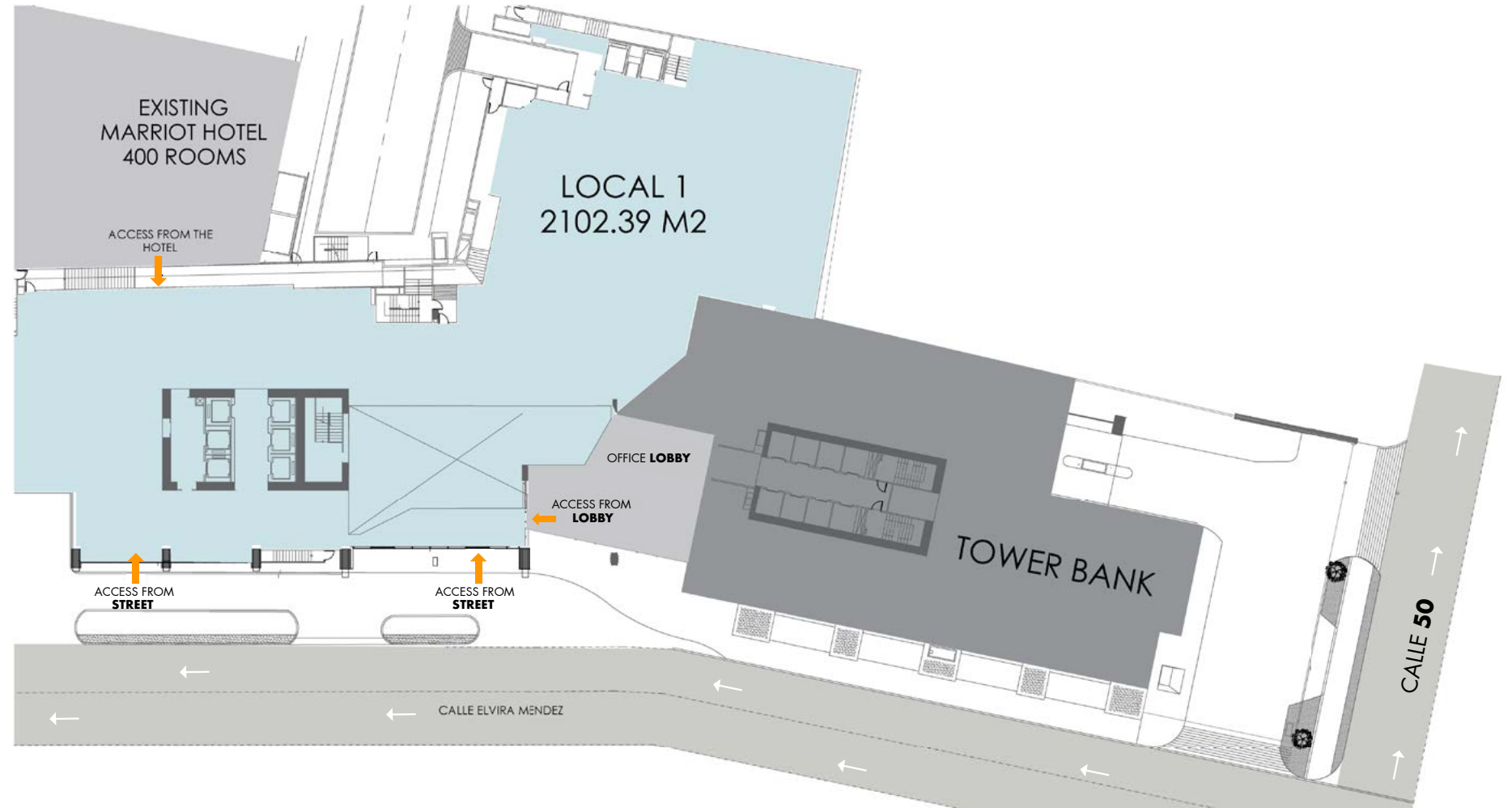
OFFICE
202m² • 360m²

- 4 offices per floor
- View of the sea or city
- Luxurious finishes
- 8 high speed elevators



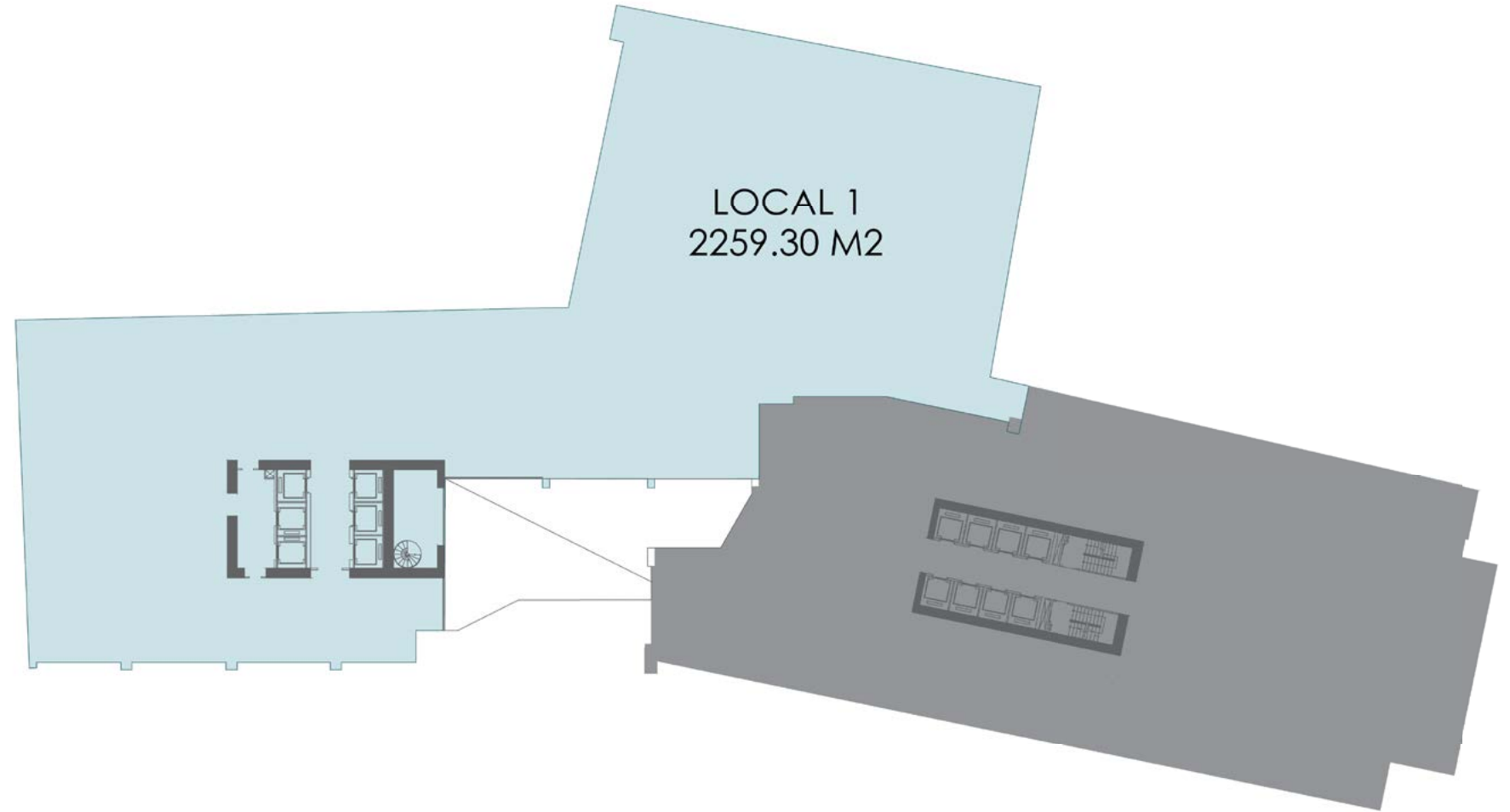
PLAN 000

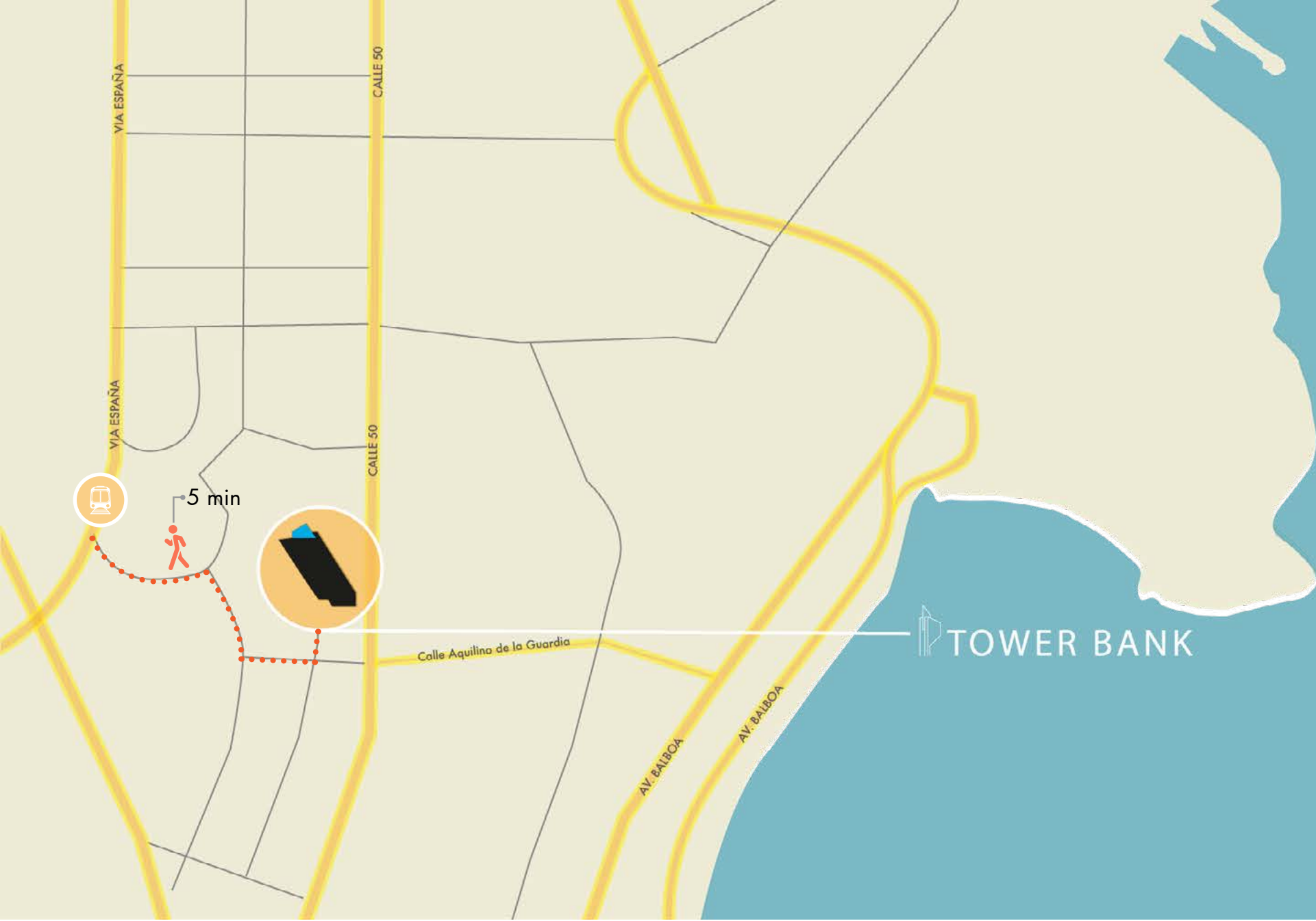
- 2100m2 without finishes
- Elegant lobby with 8mts height.
- direct access through the lobby.
- 11 mts heigh atrium.
- Mezzanine access stairs.
- 300 + 700 parking lots
- Private access to the Marriot Hotell a very close distance to more than 8
- big hotels (Hilton, W, Marriot, Bristo, Holiday Inn, Hyatt)
- Towerbank its is leading bank in Panama



Plan 050

- 2260m² without finishes
- elegant lobby with 8mts height
- direct access through the lobby
- 11mts height atrium
- 300 + 700 parking lots.
- Private access to the Marriot Hotel.
- a very close distance to more than 8 big hotels (Hilton, W, Marriott, Bristol, holiday inn, Hyatt)
- Towerbank is the leading bank in Panama





PRIVILEGED LOCATION

Tower Financial Center is located at the beginning of calle 50, one of the city's main vein and one of the most strategic zones of Panama City due to its proximity to the bank area and Marbella, place where great companies and commerces are located.

TOWER BANK



+507 214.8888

ventas@desarrollobahia.com

www.DesarrolloBahia.com



YOU DESERVE
LUXURY