

MIRADORES

PUNTA PAITILLA





1984
SINCE



+26
SUCCESSFULL
PROJECTS



+600
EMPLOYEES



520,000
M2 BURT



135,000
M2 UNDER
CONSTRUCTION



+84
CINEMAS

+35 YEARS OF EXPERIENCE

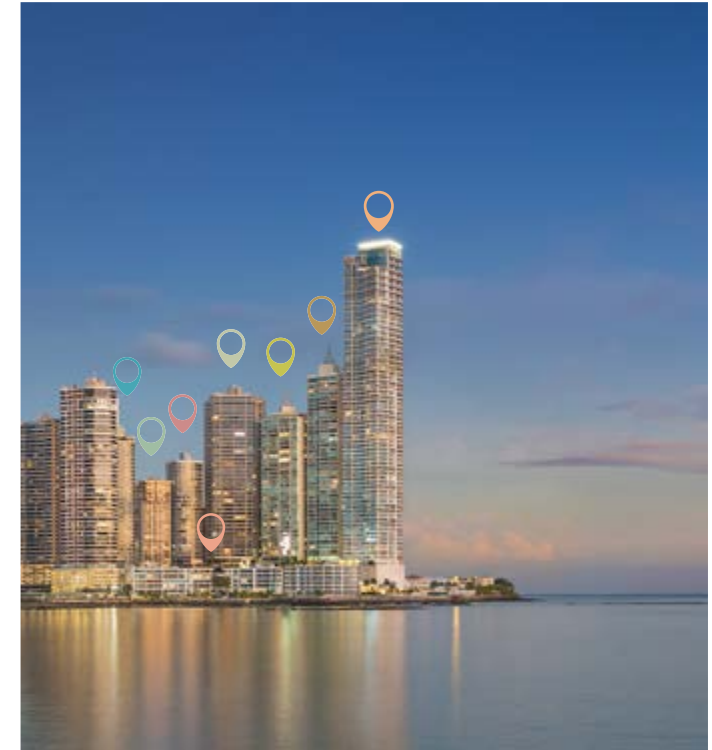
For over 35 years, Desarrollo Bahia has led the real estate development of Panama City. With each project, he has sought to reinvent himself by investing in the future.

The company refuses to settle for traditional projects; it has a truly rich and diverse portfolio of more than 360,000m2 built and another 160,000m2 under construction between residential and commercial projects, cinemas, shopping centers and hotels, which make it a pioneer in the world of real estate and construction, naturally establishing new standards in the industry.

+35 YEARS DEVELOPING THINKING ABOUT THE FUTURE



Bahía de Panamá 1965



Bahía de Panamá 2018



PUNTA PAITILLA

6
Levels

3
Torres

From 452m² to 600m²

36
Apartments

3
Elevators
in each torre



1989
Mediterrané

The beginning of a dream that today takes more than 30 years. Mediterrané was our first project under construction, at the time, one of the highest towers in Panama.



1996
Villa Marina



1998
Hotel Marriott Panama

Desarrollo Bahía sets foot in the hospitality world, marking the difference with the first luxurious hotel, the first Marriott in the country.



2003
Bahía Pacifica



2008
C.C. Multiplaza Pacific

Introducing ourselves into the commercial world, we became part of the construction of the most luxurious, largest and recognized shopping mall in the country.



2011
VIP Multiplaza

4 Cinemas
Always focused on luxury, we arrive in Panama with the first VIP cinema room with leather seats, bar / restaurant and personalized attention.



2012
Miradores

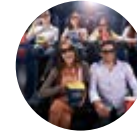


2013
Cinepolis Westland mall

8 cinemas



2015
Financial Park



2016
Cinepolis Los Andes Mall

6 cinemas



2017
Cinepolis Town Center

3 cinemas VIP
5 cinemas



The Regent
Under construction.



+35 YEARS OF EXPERIENCE



1993
Mar de Plata



1998
Plaza Banco General

First luxury office tower in the city, located where all businesses are centered, the banking area.



2002
Peninsula



2004
Punta Roca



2008
Cinepolis MP

10 cinemas
Cinepolis arrives to Panama from the hand of Desarrollo Bahía. First Cinema room with the latest technology screens in the country.



2011
Cinepolis Metromall

10 cinemas



2012
The Point

One of the most iconic tower at Panama skyline. Awarded by Carmes as the highest residential project in Latin America.



2012
Tower Financial Center

Luxury and business merge into one of the most elegant and iconic towers in Panama City, the TowerBank Tower.



2014
Country Club



2015
Cinepolis VIP Soho Mall

7 cinemas



2017
Cinepolis Dorado Mall

9 cinemas



The Tower

Under construction



Skyline

Under construction



PANAMA CITY

Panama City is a magical place with an important cultural mixture.

In a few years it has achieved a cosmopolitan life, a very charming combination between history and modernity, the international and the latin american culture. One of its main attractions is its colorful bay with a light filled skyline, where Desarrollo Bahía was part of it's construction.



MIRADORES

Miradores at the Point with only 36 apartments, it has become the most exclusive project of Panama City. It is located at the banks of Panama city's bay, giving you the impression of living above the sea. Each apartment has a wide private balcony allowing you to enjoy a very serene view, with the sound of the sea and the city lights.

Luxury, privacy, and exclusivity are the words that describe this precious project. An unparalleled complex in Panama City with an unrivaled space. The privilege of living here has no comparison.



ELEGANT LOBBY



THE VIEW

The view from every apartment of Miradores is impressive. You can enjoy the colorful sunsets, the serene ocean, the city lights and this beautiful city's contour.

Enjoy the sensation of living above the sea in the exclusive and unique Miradores project.

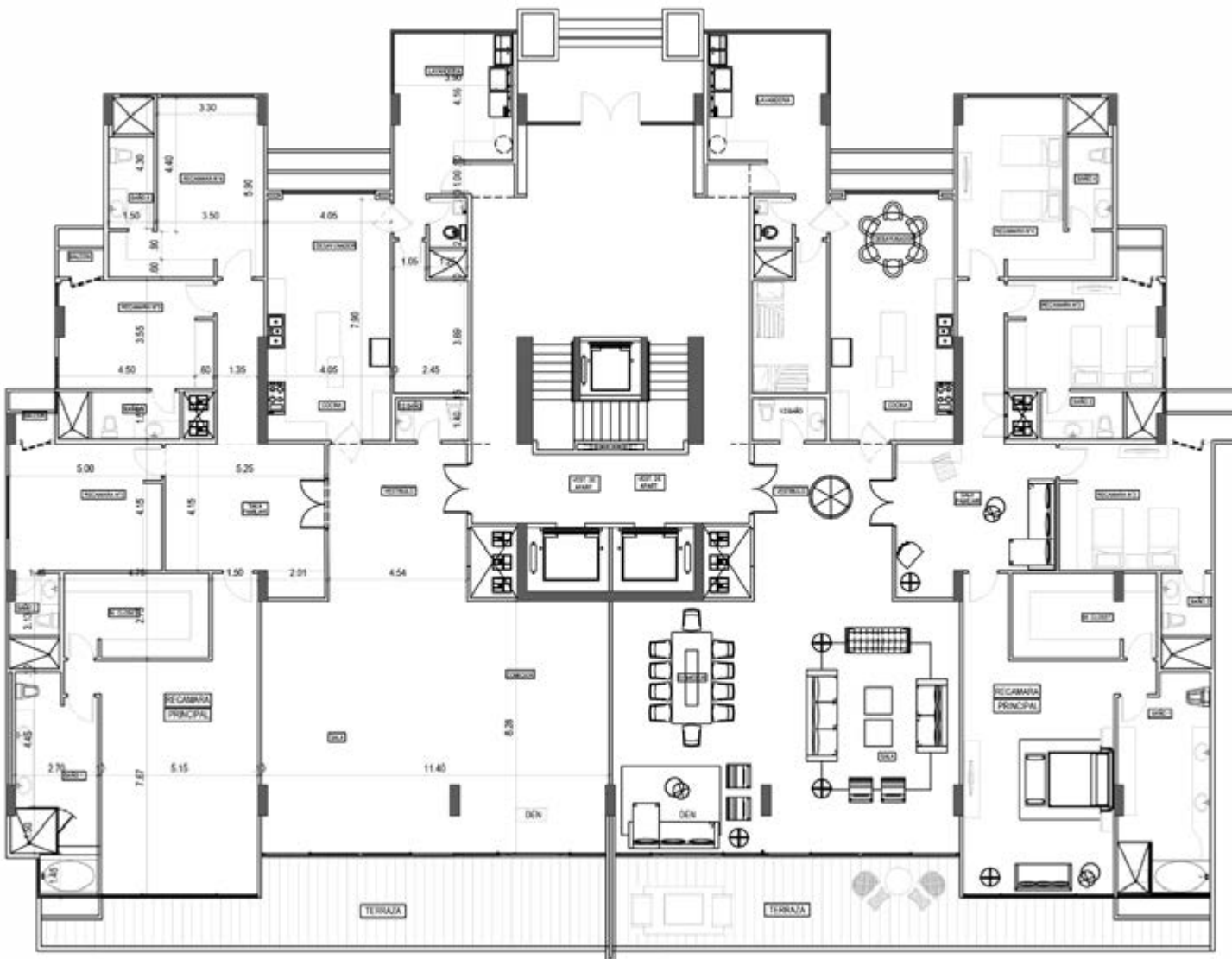
WIDE BALCONY



TORRE 100

SQUARE METRES: 480M2

4 rooms, each with a private bathroom
Living room/dining room
2 family Dens
Wide closed kitchen
Great balcony with a beautiful view



	T1	T2	T3
6			
5			
4			
3			
2			
1			

BA

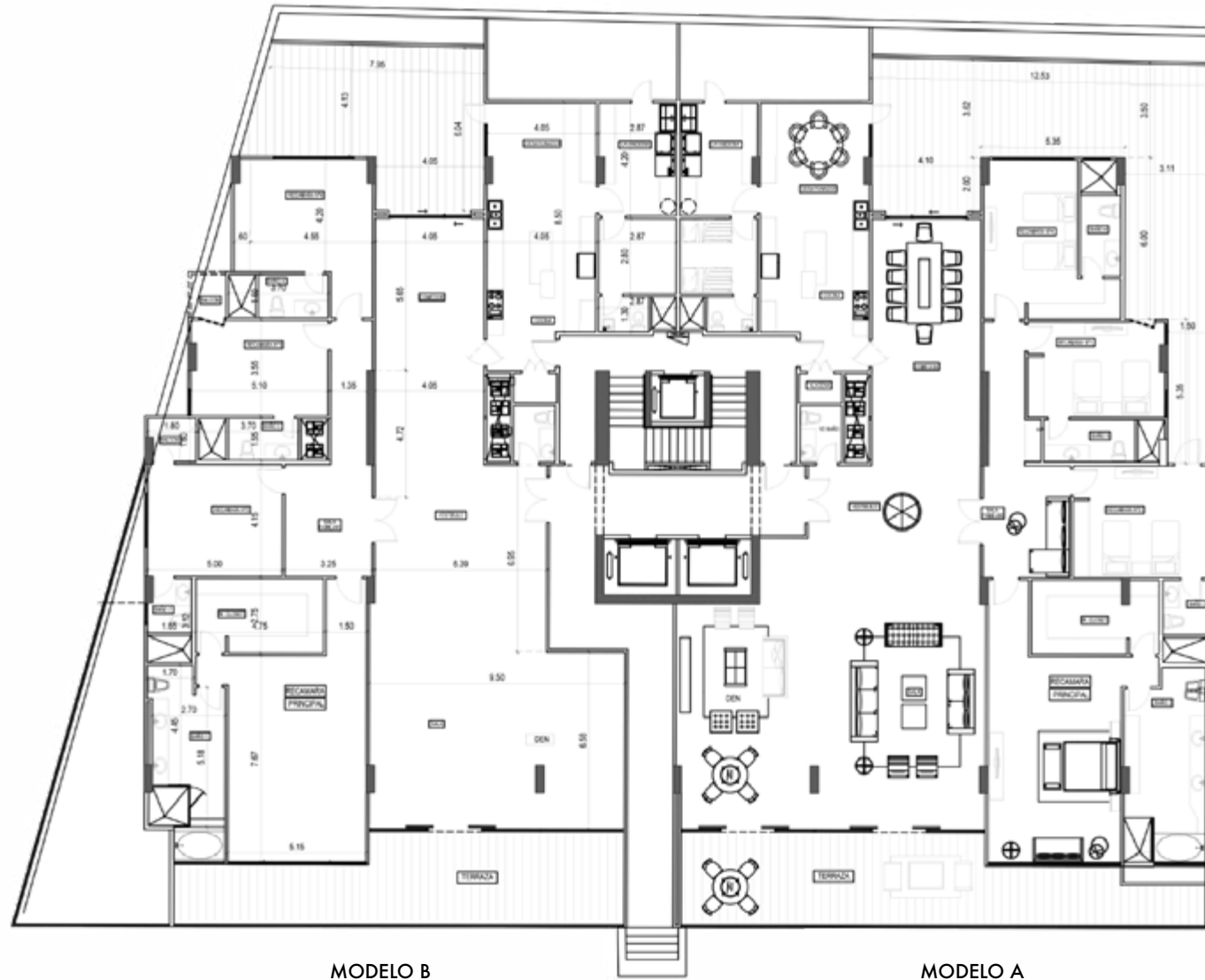
TORRE 100

SQUARE METRES: 507m² - 532M²

4 rooms each with private bathroom
Living room/ dining room
2 family dens
Wide closed kitchen
Great balcony with a beautiful view.

	T1	T2	T3
6			
5			
4			
3			
2			
1			

BA



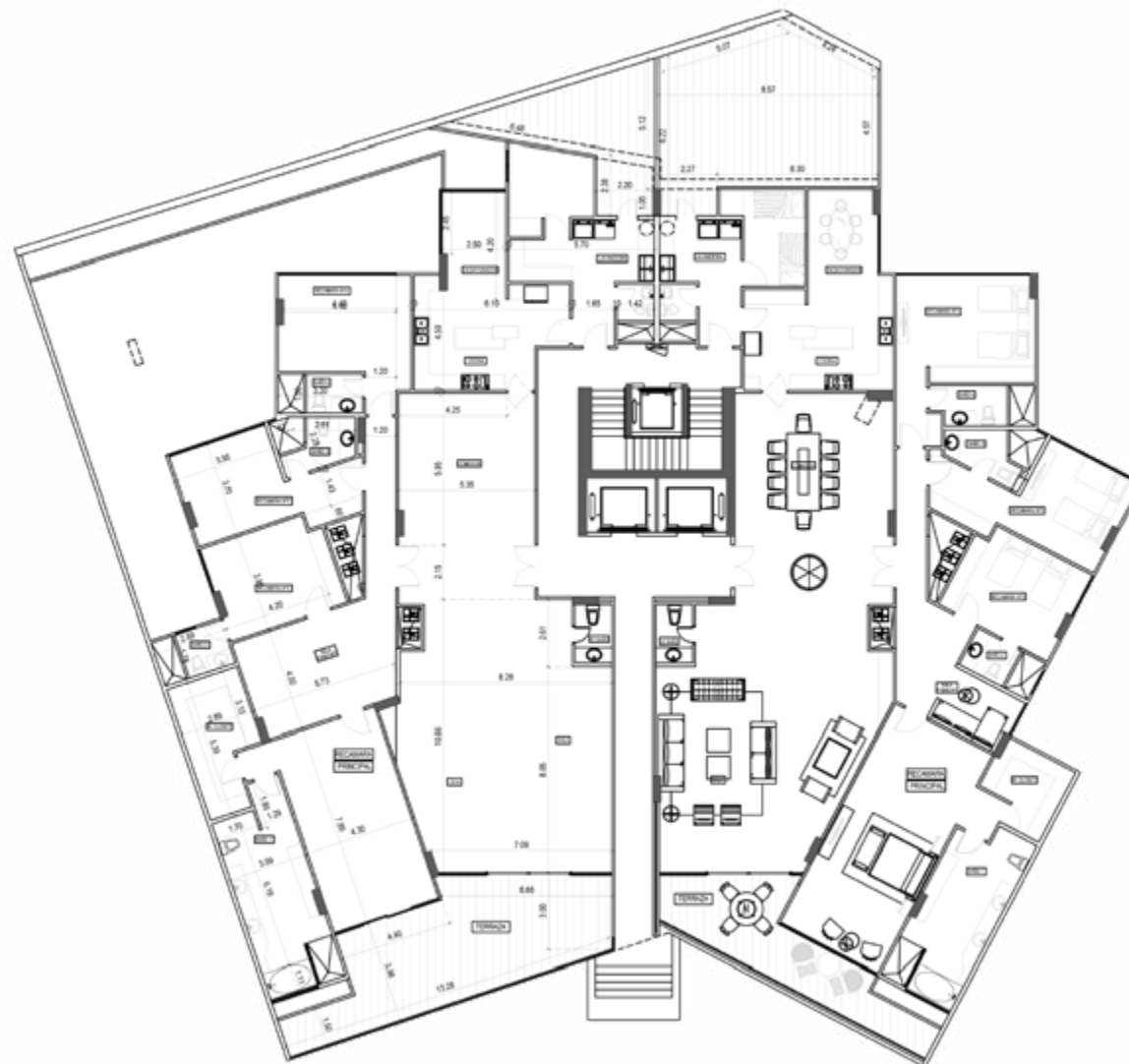
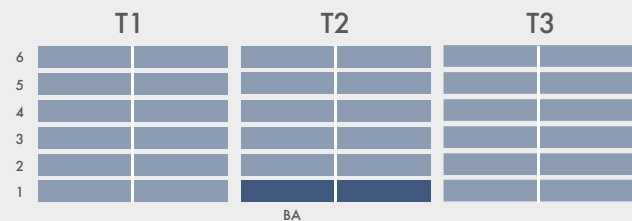


LUXURIOUS FINISHES

TORRE 200

SQUARE METRES: 482M2 - 452M2

4 rooms each with a private bathroom
Living room/dining room
2 family dens
Wide closed kitchen
Great Balcony with a beautiful view



MODELO B

MODELO A

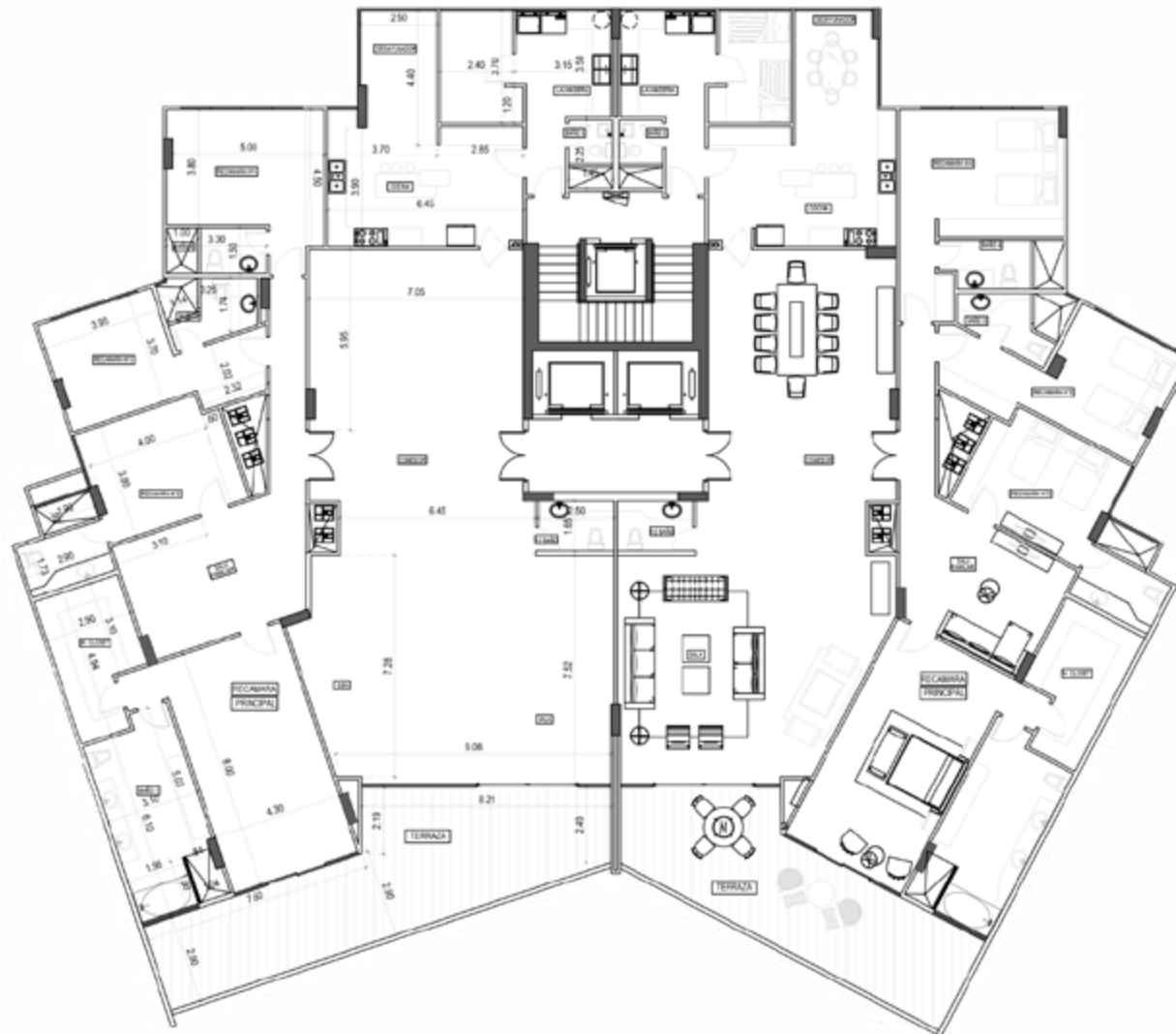
TORRE 200

SQUARE METRES: 460M2

- 4 rooms each with a private bathroom
- Living room/dining room
- 2 family dens
- Wide closed kitchen
- Great balcony with a beautiful view



BA



MODELO B

MODELO A

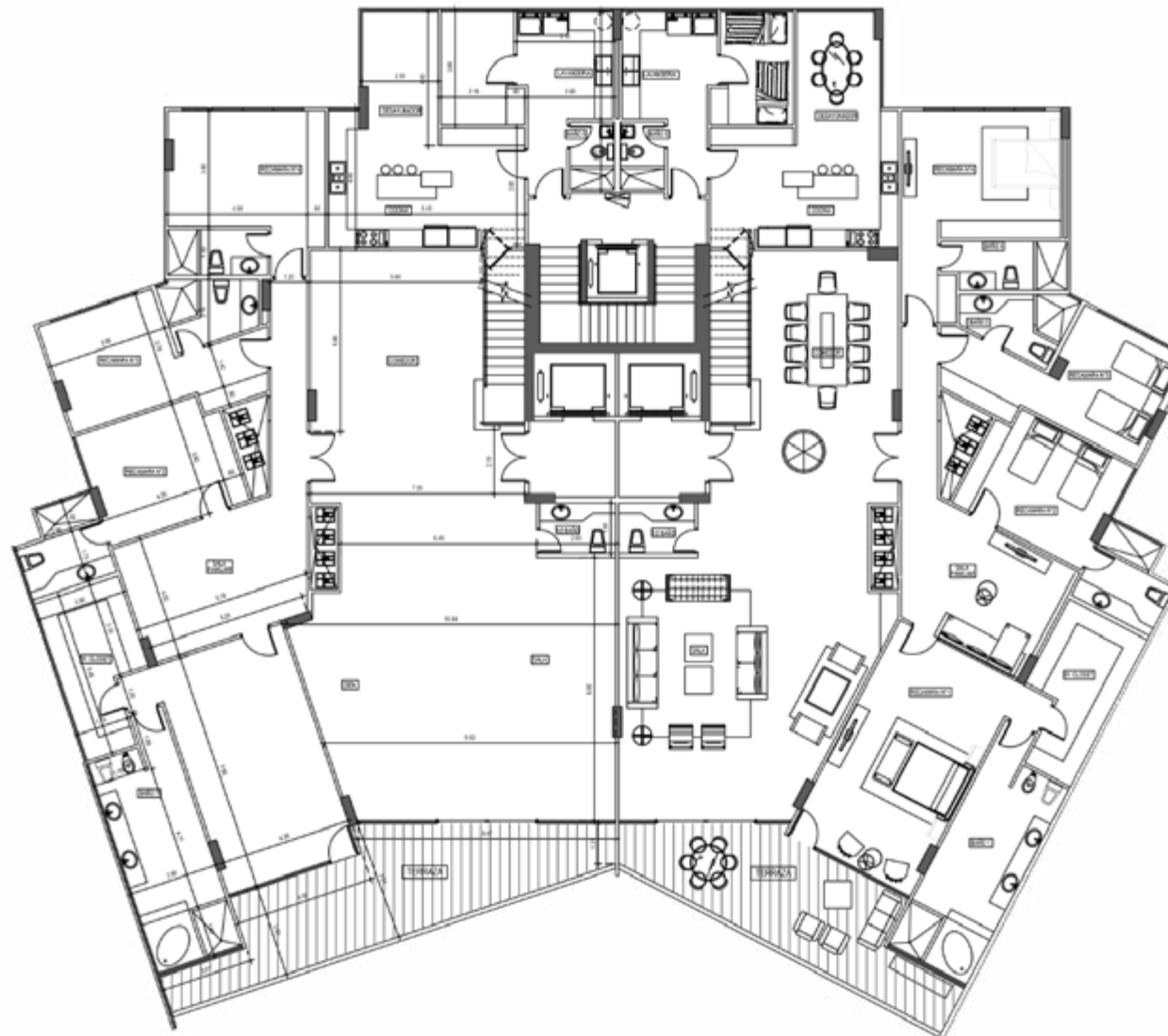
TORRE 200

SQUARE METRES: 560 - 530M2

4 rooms each with a private bathroom
Living room/ dining room
2 family den
Wide closed kitchen
Great balcony with a beautiful view

	T1	T2	T3
6			
5			
4			
3			
2			
1			

BA



MODELO B

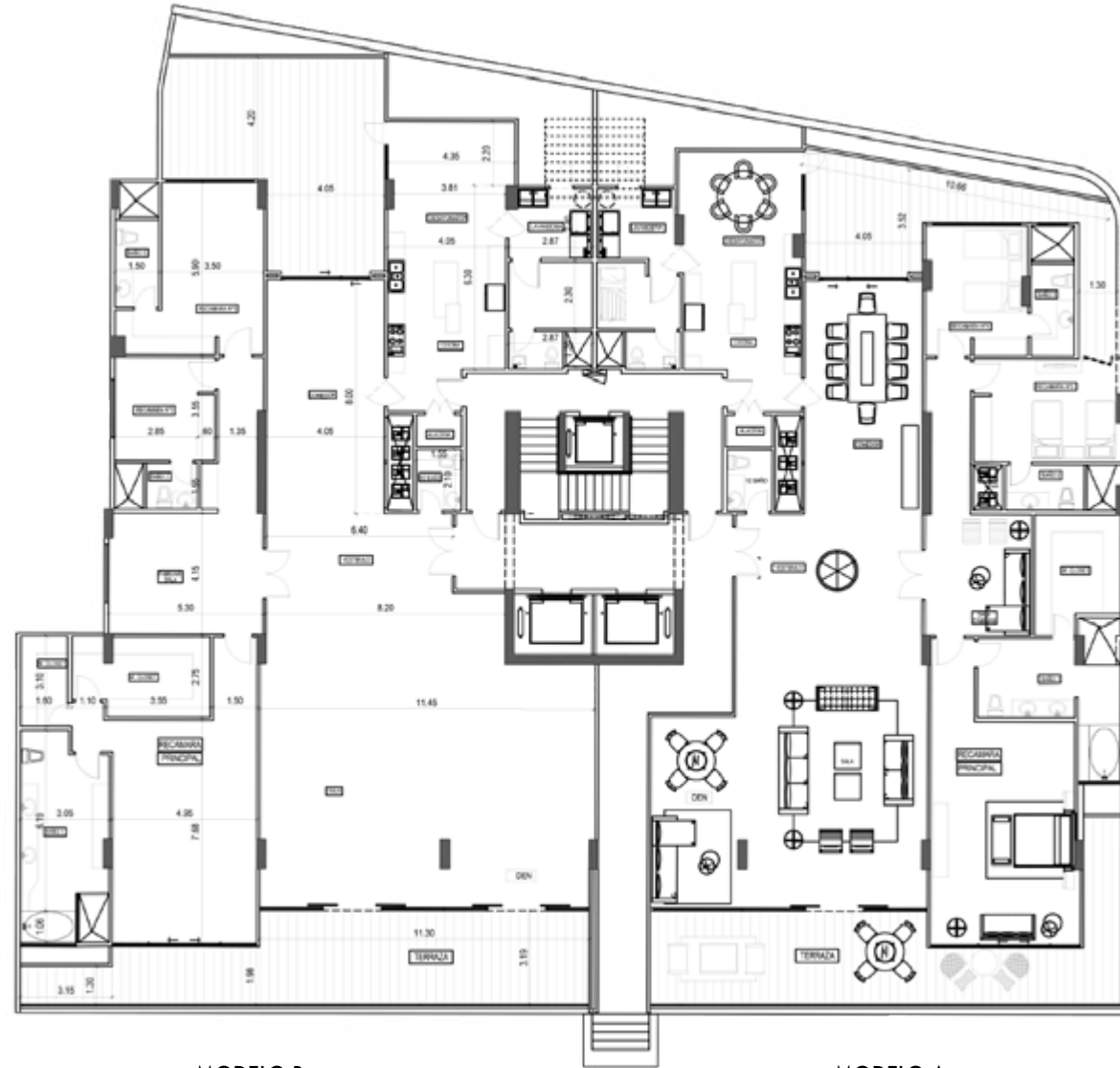
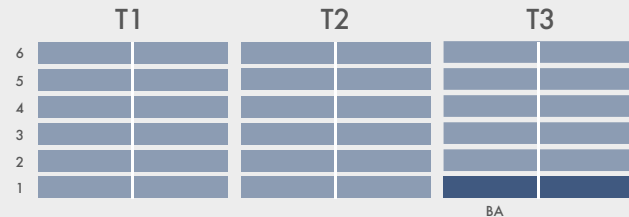
MODELO A



TORRE 300

SQUARE METRES: 500M2 - 450M2

- 4 rooms each with a private bathroom
- Living room/ dining room
- 2 family dens
- Wide closed kitchen
- Great balcony with a beautiful view



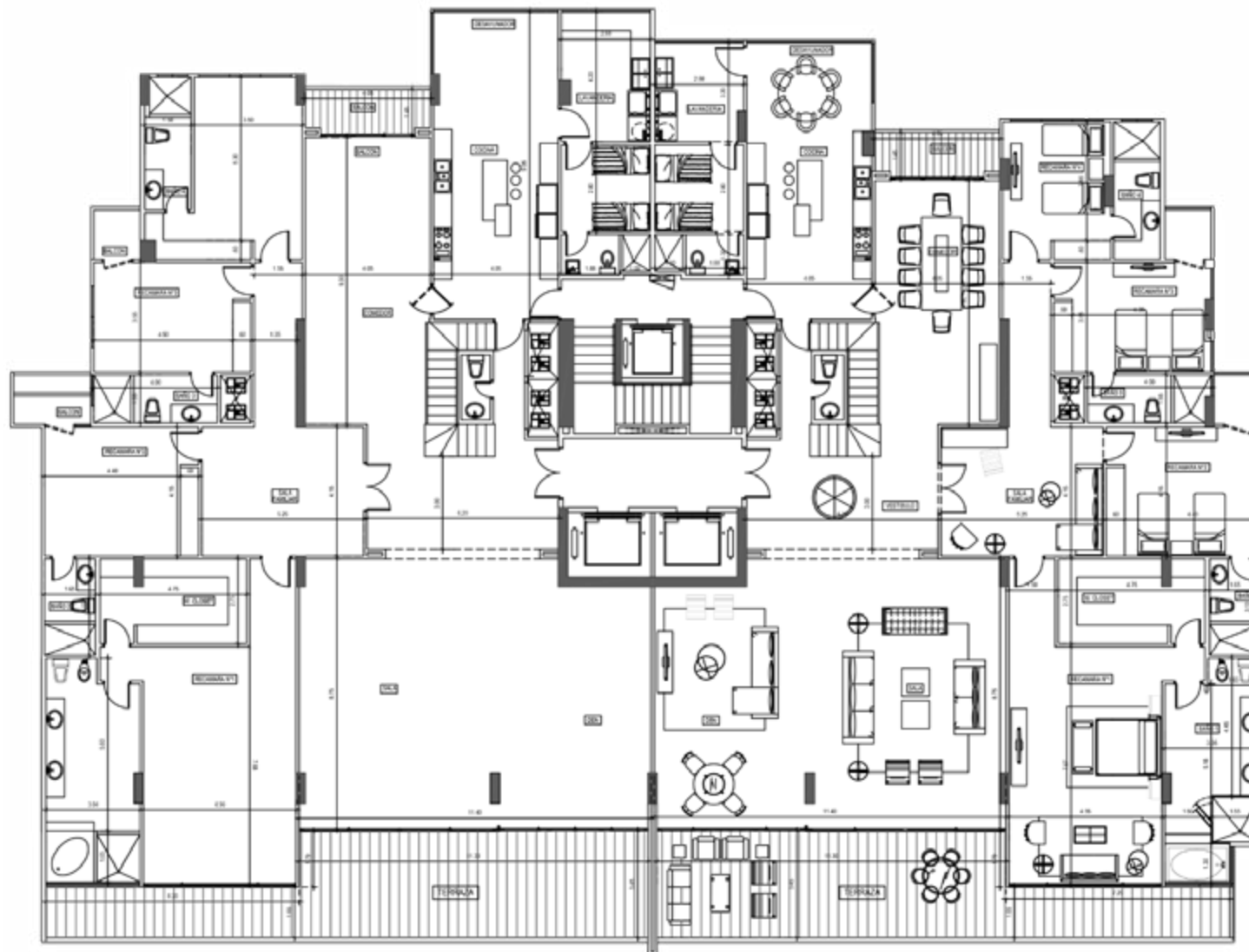
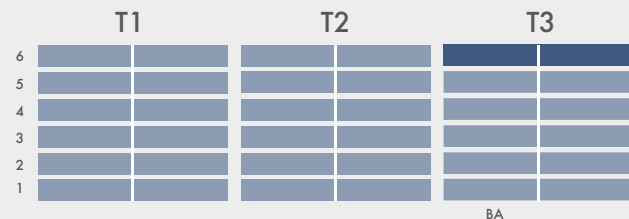
MODELO B

MODELO A

TORRE 300

SQUARE METRES: 600M2 - 580M2

4 rooms each with a private bathroom
Living room/ dining room
2 family dens
Wide closed kitchen
Great balcony with a beautiful view



MODELO B

MODELO A





LA SENSACIÓN DE VIVIR SOBRE EL MAR



DIVERSIÓN PARA LO MÁS PEQUEÑOS



OVERALL

6 story apartments
3 towers 2 apartments per floor
3 independent lobbies
Square metres from 480m2
The best view of the city and the bay
Security 24/7

LUXURY FINISHES

Ivory floors
Ivory walls in the bathrooms
Bathrooms with ivory toppings
Kitchens with granite walls, floors and toppings
Italian modular kitchen
Bathrooms with italian furniture
Solid wooden doors with decorative moldings
Panoramic glasses from floor to ceiling
American accessories in the bathrooms including private jacuzzi.

SOCIAL AREA

3 elegant lobbies decorated with great luxury
A pool for all ages
Event hall
Pool's gazebo for special occasions
Gym with a beautiful view
Gardens/green areas

VIVE EN EL PROYECTO
MÁS ÍNTIMO DE LA CIUDAD





MIRADORES

PUNTA PAITILLA

LOCATION

Located in the best spot of Punta Paitilla

It is the most exclusive building and with the lowest density in Panama City.

Punta Paitilla is one of the most exclusive zones in the city due to its proximity to the ocean and its central location.



+507 214.8888

ventas@desarrollobahia.com

www.DesarrolloBahia.com



YOU DESERVE
LUXURY